

Photo: Carlo Borlenghi

2021 - 2024

Racing Rules of Sailing

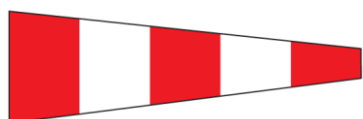
sport / nature / technology


World Sailing

RACE SIGNALS

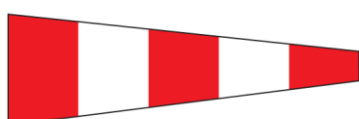
The meanings of visual and sound signals are stated below. An arrow pointing up or down (\uparrow \downarrow) means that a visual signal is displayed or removed. A dot (\bullet) means a sound; five short dashes (-----) mean repetitive sounds; a long dash (—) means a long sound. When a visual signal is displayed over a class flag, fleet flag, event flag or race area flag, the signal applies only to that class, fleet, event or race area.

Postponement Signals



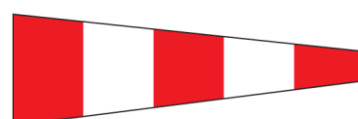
$\uparrow \bullet \bullet \downarrow \bullet$

AP Races not started are *postponed*. The warning signal will be made 1 minute after removal unless at that time the race is *postponed* again or *abandoned*.



$\uparrow \bullet \bullet$

AP over H Races not started are *postponed*. Further signals ashore.



$\uparrow \bullet \bullet$

AP over A Races not started are *postponed*. No more racing today.

AP over a Numeral Pennant 1–9

Postponement of 1-9 hours from the scheduled starting time.



Pennant 1 $\uparrow \bullet \bullet \downarrow \bullet$



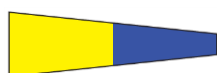
Pennant 2 $\uparrow \bullet \bullet \downarrow \bullet$



Pennant 3 $\uparrow \bullet \bullet \downarrow \bullet$



Pennant 4 $\uparrow \bullet \bullet \downarrow \bullet$



Pennant 5 $\uparrow \bullet \bullet \downarrow \bullet$



Pennant 6 $\uparrow \bullet \bullet \downarrow \bullet$



Pennant 7 $\uparrow \bullet \bullet \downarrow \bullet$

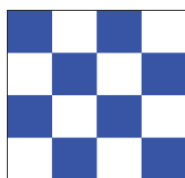


Pennant 8 $\uparrow \bullet \bullet \downarrow \bullet$



Pennant 9 $\uparrow \bullet \bullet \downarrow \bullet$

Abandonment Signals



$\uparrow \bullet \bullet \bullet \downarrow \bullet$

N All races that have started are *abandoned*. Return to the starting area. The warning signal will be made 1 minute after removal unless at that time the race is *abandoned* again or *postponed*.



$\uparrow \bullet \bullet \bullet$

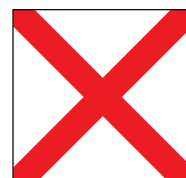
N over H All races are *abandoned*. Further signals ashore.



$\uparrow \bullet \bullet \bullet$

N over A All races are *abandoned*. No more racing today.

Safety



\uparrow —

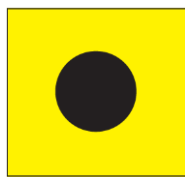
V Monitor communication channel for safety instructions (see rule 37).

Preparatory Signals



↑● ↓—

P Preparatory signal.



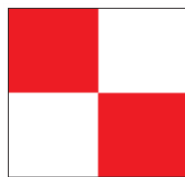
↑● ↓—

I Rule 30.1 is in effect.



↑● ↓—

Z Rule 30.2 is in effect.



↑● ↓—

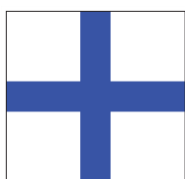
U Rule 30.3 is in effect.



↑● ↓—

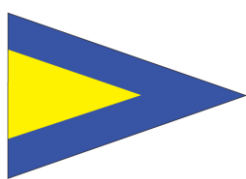
Black flag. Rule 30.4 is in effect.

Recall Signals



↑●

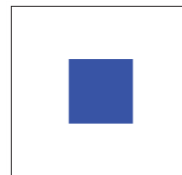
X Individual recall.



↑●● ↓●

First Substitute General recall. The warning signal will be made 1 minute after removal.

Shortened Course



↑●●

S The course has been shortened. Rule 32.2 is in effect.

Changing the Next Leg



C The position of the next *mark* has been changed:



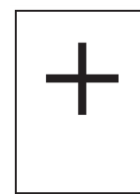
to starboard;



to port;



to decrease the length of the leg;



to increase the length of the leg.

Other Signals



↑●

L Ashore: A notice to competitors has been posted. Afloat: Come within hail or follow this vessel.

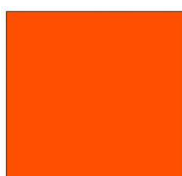


M The object displaying this signal replaces a missing *mark*.



↑●

Y Wear a personal flotation device (see rule 40).



(no sound)

Orange flag. The staff displaying this flag is one end of the starting line.



(no sound)

Blue flag. The staff displaying this flag is one end of the finishing line.

CONTENTS

Race Signals	<i>Inside front cover</i>
Online Rules Documents	4
Introduction	5
Definitions	7
Basic Principles	11
Part 1 Fundamental Rules	11
Part 2 When Boats Meet	14
Part 3 Conduct of a Race	21
Part 4 Other Requirements When Racing	26
Part 5 Protests, Redress, Hearings, Misconduct and Appeals	34
Part 6 Entry and Qualification	50
Part 7 Race Organization	52
Appendix A Scoring	57
Appendix B Windsurfing Fleet Racing Rules	61
Appendix C Match Racing Rules	72
Appendix D Team Racing Rules	86
Appendix E Radio Sailing Racing Rules	94
Appendix F Kiteboarding Racing Rules	104
Appendix G Identification on Sails	115
Appendix H Weighing Clothing and Equipment	120
Appendix J Notice of Race and Sailing Instructions	121
Notice concerning Notice of Race Guide	126
Notice concerning Sailing Instructions Guide	126
Appendix M Recommendations for Protest Committees	127
Appendix N International Juries	134
Appendix P Special Procedures for Rule 42	137
Appendix R Procedures for Appeals and Requests	140
Appendix S Standard Sailing Instructions	143
Appendix T Arbitration	150

ONLINE RULES DOCUMENTS

World Sailing has established a single internet address at which readers will find links to all the documents available on the World Sailing website that are mentioned in this book. Those documents are listed below. Links to other rules documents will also be provided at that address.

The address is: **sailing.org/racingrules/documents**

<i>Document</i>	<i>Mentioned in</i>
Guidelines for discretionary penalties	Introduction
Changes made to these rules after 1 January 2021	Introduction
World Sailing Regulations	Introduction
<i>The Case Book</i>	Introduction
<i>The Call Books</i> for various disciplines	Introduction
World Sailing Regulations with the status of a <i>rule</i>	Definition <i>Rule (b)</i>
Interpretations of Rule 42, Propulsion	Rule 42
<i>World Sailing Offshore Special Regulations</i>	Rule 49.2
<i>Equipment Rules of Sailing</i>	Rule 55
Appendix TS, Traffic Separation Schemes	Rule 56.2
Hearing Request and Hearing Decision Forms	Part 5 Preamble
Rules for other windsurfing competition formats	Appendix B Preamble
Standard Notice of Race for Match Racing	Appendix C Preamble
Standard Sailing Instructions for Match Racing	Appendix C Preamble
Match Racing Rules for Blind Competitors	Appendix C Preamble
Test Rules for Umpired Radio Sailing	Appendix E Preamble
Rules for other kiteboarding competition formats	Appendix F Preamble
Up-to-date table of national sail letters	Appendix G
Notice of Race Guide	Appendix K Notice
Sailing Instructions Guide	Appendix L Notice
Guidance on conflicts of interest	Appendix M2.3
Guidance on misconduct	Appendix M5.8
<i>World Sailing Judges Manual</i>	Appendix T Preamble

INTRODUCTION

The Racing Rules of Sailing includes two main sections. The first, Parts 1–7, contains rules that affect all competitors. The second, the appendices, provides details of rules, rules that apply to particular kinds of racing, and rules that affect only a small number of competitors or officials.

Terminology A term used in the sense stated in the Definitions is printed in italics or, in preambles, in bold italics (for example, *racing* and ***racing***).

Each of the terms in the table below is used in *The Racing Rules of Sailing* with the meaning given.

<i>Term</i>	<i>Meaning</i>
Boat	A sailboat and the crew on board.
Competitor	A person who races or intends to race in the event.
National authority	A World Sailing member national authority.
Race committee	The race committee appointed under rule 89.2(c) and any other person or committee performing a race committee function.
Racing rule	A rule in <i>The Racing Rules of Sailing</i> .
Technical committee	The technical committee appointed under rule 89.2(c) and any other person or committee performing a technical committee function.
Vessel	Any boat or ship.

Other words and terms are used in the sense ordinarily understood in nautical or general use.

Hails A language other than English may be used for a hail required by the *rules* provided that it is reasonable for it to be understood by all boats affected. However, a hail in English is always acceptable.

Notation The notation ‘[DP]’ in a *rule* means that the penalty for a breach of the *rule* may, at the discretion of the protest committee, be less than disqualification. Guidelines for discretionary penalties are available on the World Sailing website.

Revision The racing rules are revised and published every four years by World Sailing, the international authority for the sport. This edition becomes effective on 1 January 2021 except that for an event beginning in 2020 the date may be postponed by the notice of race or sailing instructions. Marginal markings indicate important changes to Parts 1–7 and the Definitions in the 2017–2020 edition. No changes are contemplated before 2025, but any changes determined to be urgent before then will be announced through national authorities and posted on the World Sailing website.

Appendices When the rules of an appendix apply, they take precedence over any conflicting rules in Parts 1–7 and the Definitions. Each appendix is identified by a letter. A reference to a rule in an appendix will contain the letter and the rule number (for example, ‘rule A1’). The letters I, O and Q are not used to designate appendices in this book.

World Sailing Regulations The Regulations are referred to in the definition *Rule* and in rule 6, but they are not included in this book because they can be changed at any time. The most recent versions of the Regulations are published on the World Sailing website; new versions will be announced through national authorities.

Interpretations World Sailing publishes the following authoritative interpretations of the racing rules:

- *The Case Book – Interpretations of the Racing Rules*,
- *The Call Books*, for various disciplines,
- Interpretations of Rule 42, Propulsion, and
- Interpretations of the Regulations, for those Regulations that are *rules*.

These publications are available on the World Sailing website. Other interpretations of the racing rules are not authoritative unless approved by World Sailing in accordance with Regulation 28.4.

DEFINITIONS

A term used as stated below is shown in italic type or, in preambles, in bold italic type. The meaning of several other terms is given in Terminology in the Introduction.

Abandon A race that a race committee or protest committee *abandons* is void but may be resailed.

Clear Astern and Clear Ahead; Overlap One boat is *clear astern* of another when her hull and equipment in normal position are behind a line abeam from the aftermost point of the other boat's hull and equipment in normal position. The other boat is *clear ahead*. They *overlap* when neither is *clear astern*. However, they also *overlap* when a boat between them *overlaps* both. These terms always apply to boats on the same *tack*. They apply to boats on opposite *tacks* only when rule 18 applies between them or when both boats are sailing more than ninety degrees from the true wind.

Conflict of Interest A person has a *conflict of interest* if he

- (a) may gain or lose as a result of a decision to which he contributes,
- (b) may reasonably appear to have a personal or financial interest which could affect his ability to be impartial, or
- (c) has a close personal interest in a decision.

Fetching A boat is *fetching* a *mark* when she is in a position to pass to windward of it and leave it on the required side without changing *tack*.

Finish A boat *finishes* when, after *starting*, any part of her hull crosses the finishing line from the course side. However, she has not *finished* if after crossing the finishing line she

- (a) takes a penalty under rule 44.2,
- (b) corrects an error in *sailing the course* made at the line, or
- (c) continues to *sail the course*.

Keep Clear A boat *keeps clear* of a right-of-way boat

- (a) if the right-of-way boat can sail her course with no need to take avoiding action and,
- (b) when the boats are *overlapped*, if the right-of-way boat can also change course in both directions without immediately making contact.

DEFINITIONS

Leeward and Windward A boat's *leeward* side is the side that is or, when she is head to wind, was away from the wind. However, when sailing by the lee or directly downwind, her *leeward* side is the side on which her mainsail lies. The other side is her *windward* side. When two boats on the same *tack overlap*, the one on the *leeward* side of the other is the *leeward* boat. The other is the *windward* boat.

Mark An object the sailing instructions require a boat to leave on a specified side, a race committee vessel surrounded by navigable water from which the starting or finishing line extends, and an object intentionally attached to the object or vessel. However, an anchor line is not part of the *mark*.

Mark-Room Room for a boat to leave a *mark* on the required side. Also,

- (a) *room* to sail to the *mark* when her *proper course* is to sail close to it, and
- (b) *room* to round or pass the *mark* as necessary to *sail the course* without touching the *mark*.

However, *mark-room* for a boat does not include *room* to tack unless she is *overlapped* inside and to *windward* of the boat required to give *mark-room* and she would be *fetching* the *mark* after her tack.

Obstruction An object that a boat could not pass without changing course substantially, if she were sailing directly towards it and one of her hull lengths from it. An object that can be safely passed on only one side and an object, area or line so designated by the sailing instructions are also *obstructions*. However, a boat *racing* is not an *obstruction* to other boats unless they are required to *keep clear* of her or, if rule 22 applies, avoid her. A vessel under way, including a boat *racing*, is never a continuing *obstruction*.

Overlap See *Clear Astern and Clear Ahead; Overlap*.

Party A *party* to a hearing is

- (a) for a protest hearing: a protestor, a protestee;
- (b) for a redress hearing: a boat requesting redress or for which redress is requested; a boat for which a hearing is called to consider redress under rule 60.3(b); a race committee acting under rule 60.2(b); a technical committee acting under rule 60.4(b);

DEFINITIONS

- (c) for a redress hearing under rule 62.1(a): the body alleged to have made an improper action or omission;
- (d) a person against whom an allegation of a breach of rule 69.1(a) is made; a person presenting an allegation under rule 69.2(e)(1);
- (e) a *support person* subject to a hearing under rule 60.3(d) or 69; any boat that person supports; a person appointed to present an allegation under rule 60.3(d).

However, the protest committee is never a *party*.

Postpone A *postponed* race is delayed before its scheduled start but may be started or *abandoned* later.

Proper Course A course a boat would choose in order to *sail the course* and *finish* as soon as possible in the absence of the other boats referred to in the rule using the term. A boat has no *proper course* before her starting signal.

Protest An allegation made under rule 61.2 by a boat, a race committee, a technical committee or a protest committee that a boat has broken a *rule*.

Racing A boat is *racing* from her preparatory signal until she *finishes* and clears the finishing line and *marks* or retires, or until the race committee signals a general recall, *postponement* or *abandonment*.

Room The space a boat needs in the existing conditions, including space to comply with her obligations under the rules of Part 2 and rule 31, while manoeuvring promptly in a seamanlike way.

Rule

- (a) The rules in this book, including the Definitions, Race Signals, Introduction, preambles and the rules of relevant appendices, but not titles;
- (b) World Sailing Regulations that have been designated by World Sailing as having the status of a *rule* and are published on the World Sailing website;
- (c) the prescriptions of the national authority, unless they are changed by the notice of race or sailing instructions in compliance with the national authority's prescription, if any, to rule 88.2;
- (d) the class rules (for a boat racing under a handicap or rating system, the rules of that system are 'class rules');
- (e) the notice of race;

DEFINITIONS

- (f) the sailing instructions; and
- (g) any other documents that govern the event.

Sail the Course A boat *sails the course* provided that a string representing her track from the time she begins to approach the starting line from its pre-start side to *start* until she *finishes*, when drawn taut,

- (a) passes each *mark* of the course for the race on the required side and in the correct order,
- (b) touches each *mark* designated in the sailing instructions to be a rounding *mark*, and
- (c) passes between the *marks* of a gate from the direction of the course from the previous *mark*.

Start A boat *starts* when, her hull having been entirely on the pre-start side of the starting line at or after her starting signal, and having complied with rule 30.1 if it applies, any part of her hull crosses the starting line from the pre-start side to the course side.

Support Person Any person who

- (a) provides, or may provide, physical or advisory support to a competitor, including any coach, trainer, manager, team staff, medic, paramedic or any other person working with, treating or assisting a competitor in or preparing for the competition, or
- (b) is the parent or guardian of a competitor.

Tack, Starboard or Port A boat is on the *tack, starboard* or *port*, corresponding to her *windward* side.

Windward See ***Leeward and Windward***.

Zone The area around a *mark* within a distance of three hull lengths of the boat nearer to it. A boat is in the *zone* when any part of her hull is in the *zone*.

BASIC PRINCIPLES

SPORTSMANSHIP AND THE RULES

Competitors in the sport of sailing are governed by a body of *rules* that they are expected to follow and enforce. A fundamental principle of sportsmanship is that when a boat breaks a *rule* and is not exonerated she will promptly take an appropriate penalty or action, which may be to retire.

ENVIRONMENTAL RESPONSIBILITY

Participants are encouraged to minimize any adverse environmental impact of the sport of sailing.

PART 1

FUNDAMENTAL RULES

1 SAFETY

1.1 Helping Those in Danger

A boat, competitor or *support person* shall give all possible help to any person or vessel in danger.

1.2 Life-Saving Equipment and Personal Flotation Devices

A boat shall carry adequate life-saving equipment for all persons on board, including one item ready for immediate use, unless her class rules make some other provision. Each competitor is individually responsible for wearing a personal flotation device adequate for the conditions.

2 FAIR SAILING

A boat and her owner shall compete in compliance with recognized principles of sportsmanship and fair play. A boat may be penalized under this rule only if it is clearly established that these principles have been violated. The penalty shall be a disqualification that is not excludable.

3 DECISION TO RACE

The responsibility for a boat's decision to participate in a race or to continue *racing* is hers alone.

4 ACCEPTANCE OF THE RULES

4.1 (a) By participating or intending to participate in an event conducted under the *rules*, each competitor and boat owner agrees to accept the *rules*.

(b) A *support person* by providing support, or a parent or guardian by permitting their child to enter an event, agrees to accept the *rules*.

4.2 Each competitor and boat owner agrees, on behalf of their *support persons*, that such *support persons* are bound by the *rules*.

4.3 Acceptance of the *rules* includes agreement

(a) to be governed by the *rules*;

(b) to accept the penalties imposed and other action taken under the *rules*, subject to the appeal and review procedures provided in them, as the final determination of any matter arising under the *rules*;

(c) with respect to any such determination, not to resort to any court of law or tribunal not provided for in the *rules*; and

(d) by each competitor and boat owner to ensure that their *support persons* are aware of the *rules*.

4.4 The person in charge of each boat shall ensure that all competitors in the crew and the boat's owner are aware of their responsibilities under this rule.

4.5 This rule may be changed by a prescription of the national authority of the venue.

5 RULES GOVERNING ORGANIZING AUTHORITIES AND OFFICIALS

The organizing authority, race committee, technical committee, protest committee and other race officials shall be governed by the *rules* in the conduct and judging of the event.

6 WORLD SAILING REGULATIONS

6.1 Each competitor, boat owner and *support person* shall comply with the World Sailing Regulations that have been designated by World Sailing as having the status of a *rule*. These regulations as of 30 June 2020 are the World Sailing:

- Advertising Code
- Anti-Doping Code
- Betting and Anti-Corruption Code
- Disciplinary Code
- Eligibility Code
- Sailor Categorization Code

6.2 Rule 63.1 does not apply unless *protests* are permitted in the Regulation alleged to have been broken.

PART 2

WHEN BOATS MEET

*The rules of Part 2 apply between boats that are sailing in or near the racing area and intend to **race**, are **racing**, or have been **racing**. However, a boat not **racing** shall not be penalized for breaking one of these rules, except rule 14 when the incident resulted in injury or serious damage, or rule 23.1.*

When a boat sailing under these rules meets a vessel that is not, she shall comply with the International Regulations for Preventing Collisions at Sea (IRPCAS) or government right-of-way rules. If the notice of race so states, the rules of Part 2 are replaced by the right-of-way rules of the IRPCAS or by government right-of-way rules.

SECTION A

RIGHT OF WAY

*A boat has right of way over another boat when the other boat is required to **keep clear** of her. However, some rules in Sections B, C and D limit the actions of a right-of-way boat.*

10 ON OPPOSITE TACKS

*When boats are on opposite *tacks*, a *port-tack* boat shall *keep clear* of a *starboard-tack* boat.*

11 ON THE SAME TACK, OVERLAPPED

*When boats are on the same *tack* and *overlapped*, a *windward* boat shall *keep clear* of a *leeward* boat.*

12 ON THE SAME TACK, NOT OVERLAPPED

*When boats are on the same *tack* and not *overlapped*, a boat *clear astern* shall *keep clear* of a boat *clear ahead*.*

13 WHILE TACKING

*After a boat passes head to wind, she shall *keep clear* of other boats until she is on a close-hauled course. During that time rules 10, 11 and 12 do not apply. If two boats are subject to this rule at the same*

time, the one on the other's port side or the one astern shall *keep clear*.

SECTION B

GENERAL LIMITATIONS

14 AVOIDING CONTACT

A boat shall avoid contact with another boat if reasonably possible. However, a right-of-way boat, or one sailing within the *room* or *mark-room* to which she is entitled, need not act to avoid contact until it is clear that the other boat is not *keeping clear* or giving *room* or *mark-room*.

15 ACQUIRING RIGHT OF WAY

When a boat acquires right of way, she shall initially give the other boat *room to keep clear*, unless she acquires right of way because of the other boat's actions.

16 CHANGING COURSE

16.1 When a right-of-way boat changes course, she shall give the other boat *room to keep clear*.

16.2 In addition, on a beat to windward when a *port-tack* boat is *keeping clear* by sailing to pass to leeward of a *starboard-tack* boat, the *starboard-tack* boat shall not bear away if as a result the *port-tack* boat must change course immediately to continue *keeping clear*.

17 ON THE SAME TACK; PROPER COURSE

If a boat *clear astern* becomes *overlapped* within two of her hull lengths to *leeward* of a boat on the same *tack*, she shall not sail above her *proper course* while they remain on the same *tack* and *overlapped* within that distance, unless in doing so she promptly sails astern of the other boat. This rule does not apply if the *overlap* begins while the *windward* boat is required by rule 13 to *keep clear*.

SECTION C

AT MARKS AND OBSTRUCTIONS

*Section C rules do not apply at a starting **mark** surrounded by navigable water or at its anchor line from the time boats are approaching them to **start** until they have passed them.*

18 MARK-ROOM

18.1 When Rule 18 Applies

Rule 18 applies between boats when they are required to leave a *mark* on the same side and at least one of them is in the *zone*. However, it does not apply

- (a) between boats on opposite *tacks* on a beat to windward,
- (b) between boats on opposite *tacks* when the *proper course* at the *mark* for one but not both of them is to tack,
- (c) between a boat approaching a *mark* and one leaving it, or
- (d) if the *mark* is a continuing *obstruction*, in which case rule 19 applies.

Rule 18 no longer applies between boats when *mark-room* has been given.

18.2 Giving Mark-Room

- (a) When boats are *overlapped* the outside boat shall give the inside boat *mark-room*, unless rule 18.2(b) applies.
- (b) If boats are *overlapped* when the first of them reaches the *zone*, the outside boat at that moment shall thereafter give the inside boat *mark-room*. If a boat is *clear ahead* when she reaches the *zone*, the boat *clear astern* at that moment shall thereafter give her *mark-room*.
- (c) When a boat is required to give *mark-room* by rule 18.2(b),
 - (1) she shall continue to do so even if later an *overlap* is broken or a new *overlap* begins;
 - (2) if she becomes *overlapped* inside the boat entitled to *mark-room*, she shall also give that boat *room* to sail her *proper course* while they remain *overlapped*.

- (d) Rules 18.2(b) and (c) cease to apply if the boat entitled to *mark-room* passes head to wind or leaves the *zone*.
- (e) If there is reasonable doubt that a boat obtained or broke an *overlap* in time, it shall be presumed that she did not.
- (f) If a boat obtained an inside *overlap* from *clear astern* or by tacking to *windward* of the other boat and, from the time the *overlap* began, the outside boat has been unable to give *mark-room*, she is not required to give it.

18.3 Passing Head to Wind in the Zone

If a boat in the *zone* of a *mark* to be left to port passes head to wind from *port* to *starboard tack* and is then *fetching* the *mark*, she shall not cause a boat that has been on *starboard tack* since entering the *zone* to sail above close-hauled to avoid contact and she shall give *mark-room* if that boat becomes *overlapped* inside her. When this rule applies between boats, rule 18.2 does not apply between them.

18.4 Gybing

When an inside *overlapped* right-of-way boat must gybe at a *mark* to sail her *proper course*, until she gybes she shall sail no farther from the *mark* than needed to sail that course. Rule 18.4 does not apply at a gate *mark*.

19 ROOM TO PASS AN OBSTRUCTION

19.1 When Rule 19 Applies

Rule 19 applies between two boats at an *obstruction* except

- (a) when the *obstruction* is a *mark* the boats are required to leave on the same side, or
- (b) when rule 18 applies between the boats and the *obstruction* is another boat *overlapped* with each of them.

However, at a continuing *obstruction*, rule 19 always applies and rule 18 does not.

19.2 Giving Room at an Obstruction

- (a) A right-of-way boat may choose to pass an *obstruction* on either side.
- (b) When boats are *overlapped*, the outside boat shall give the inside boat *room* between her and the *obstruction*, unless she has been unable to do so from the time the *overlap* began.
- (c) While boats are passing a continuing *obstruction*, if a boat that was *clear astern* and required to *keep clear* becomes *overlapped* between the other boat and the *obstruction* and, at the moment the *overlap* begins, there is not *room* for her to pass between them,
 - (1) she is not entitled to *room* under rule 19.2(b), and
 - (2) while the boats remain *overlapped*, she shall *keep clear* and rules 10 and 11 do not apply.

20 ROOM TO TACK AT AN OBSTRUCTION

20.1 Hailing

A boat may hail for *room* to tack and avoid a boat on the same *tack*. However, she shall not hail unless

- (a) she is approaching an *obstruction* and will soon need to make a substantial course change to avoid it safely, and
- (b) she is sailing close-hauled or above.

In addition, she shall not hail if the *obstruction* is a *mark* and a boat that is *fetching* it would be required to change course as a result of the hail.

20.2 Responding

- (a) After a boat hails, she shall give a hailed boat time to respond.
- (b) A hailed boat shall respond even if the hail breaks rule 20.1.
- (c) A hailed boat shall respond either by tacking as soon as possible, or by immediately replying 'You tack' and then giving the hailing boat *room* to tack and avoid her.
- (d) When a hailed boat responds, the hailing boat shall tack as soon as possible.
- (e) From the time a boat hails until she has tacked and avoided a hailed boat, rule 18.2 does not apply between them.

20.3 Passing On a Hail to an Additional Boat

When a boat has been hailed for *room* to tack and she intends to respond by tacking, she may hail another boat on the same *tack* for *room* to tack and avoid her. She may hail even if her hail does not meet the conditions of rule 20.1. Rule 20.2 applies between her and a boat she hails.

20.4 Additional Requirements for Hails

- (a) When conditions are such that a hail may not be heard, the boat shall also make a signal that clearly indicates her need for *room* to tack or her response.
- (b) The notice of race may specify an alternative communication for a boat to indicate her need for *room* to tack or her response, and require boats to use it.

SECTION D

OTHER RULES

When rule 21 or 22 applies between two boats, Section A rules do not.

21 STARTING ERRORS; TAKING PENALTIES; BACKING A SAIL

21.1 A boat sailing towards the pre-start side of the starting line or one of its extensions after her starting signal to *start* or to comply with rule 30.1 shall *keep clear* of a boat not doing so until her hull is completely on the pre-start side.

21.2 A boat taking a penalty shall *keep clear* of one that is not.

21.3 A boat moving astern, or sideways to windward, through the water by backing a sail shall *keep clear* of one that is not.

22 CAPSIZED, ANCHORED OR AGROUND; RESCUING

If possible, a boat shall avoid a boat that is capsized or has not regained control after capsizing, is anchored or aground, or is trying to help a person or vessel in danger. A boat is capsized when her masthead is in the water.

23 INTERFERING WITH ANOTHER BOAT

23.1 If reasonably possible, a boat not *racing* shall not interfere with a boat that is *racing*.

23.2 If reasonably possible, a boat shall not interfere with a boat that is taking a penalty, sailing on another leg or subject to rule 21.1. However, after the starting signal this rule does not apply when the boat is sailing her *proper course*.

PART 3

CONDUCT OF A RACE

25 NOTICE OF RACE, SAILING INSTRUCTIONS AND SIGNALS

25.1 The notice of race shall be made available to each boat that enters an event before she enters. The sailing instructions shall be made available to each boat before a race begins.

25.2 The meanings of the visual and sound signals stated in Race Signals shall not be changed except under rule 86.1(b). The meanings of any other signals that may be used shall be stated in the notice of race or sailing instructions.

25.3 When the race committee is required to display a flag as a visual signal, it may use a flag or other object of a similar appearance.

26 STARTING RACES

Races shall be started by using the following signals. Times shall be taken from the visual signals; the absence of a sound signal shall be disregarded.

<i>Minutes before starting signal</i>	<i>Visual signal</i>	<i>Sound signal</i>	<i>Means</i>
5*	Class flag	One	Warning signal
4	P, I, Z, Z with I, U, or black flag	One	Preparatory signal
1	Preparatory flag removed	One long	One minute
0	Class flag removed	One	Starting signal

*or as stated in the notice of race or sailing instructions

The warning signal for each succeeding class shall be made with or after the starting signal of the preceding class.

27 OTHER RACE COMMITTEE ACTIONS BEFORE THE STARTING SIGNAL

27.1 No later than the warning signal, the race committee shall signal or otherwise designate the course to be sailed if the sailing instructions

have not stated the course, and it may replace one course signal with another and signal that wearing personal flotation devices is required (display flag Y with one sound).

27.2 No later than the preparatory signal, the race committee may move a starting *mark*.

27.3 Before the starting signal, the race committee may for any reason *postpone* (display flag AP, AP over H, or AP over A, with two sounds) or *abandon* the race (display flag N over H, or N over A, with three sounds).

28 SAILING THE RACE

28.1 A boat shall *start, sail the course* and then *finish*. While doing so, she may leave on either side a *mark* that does not begin, bound or end the leg she is sailing. After *finishing* she need not cross the finishing line completely.

28.2 A boat may correct any errors in *sailing the course*, provided she has not crossed the finishing line to *finish*.

29 RECALLS

29.1 Individual Recall

When at a boat's starting signal any part of her hull is on the course side of the starting line or she must comply with rule 30.1, the race committee shall promptly display flag X with one sound. The flag shall be displayed until the hull of each such boat has been completely on the pre-start side of the starting line or one of its extensions, and until all such boats have complied with rule 30.1 if it applies, but no later than four minutes after the starting signal or one minute before any later starting signal, whichever is earlier. If rule 29.2, 30.3 or 30.4 applies this rule does not.

29.2 General Recall

When at the starting signal the race committee is unable to identify boats that are on the course side of the starting line or to which rule 30 applies, or there has been an error in the starting procedure, the race committee may signal a general recall (display the First Substitute with two sounds). The warning signal for a new start for the recalled class shall be made one minute after the First Substitute

is removed (one sound), and the starts for any succeeding classes shall follow the new start.

30 STARTING PENALTIES

30.1 I Flag Rule

If flag I has been displayed, and any part of a boat's hull is on the course side of the starting line or one of its extensions during the last minute before her starting signal, she shall sail across an extension so that her hull is completely on the pre-start side before she *starts*.

30.2 Z Flag Rule

If flag Z has been displayed, no part of a boat's hull shall be in the triangle formed by the ends of the starting line and the first *mark* during the last minute before her starting signal. If a boat breaks this rule and is identified, she shall receive, without a hearing, a 20% Scoring Penalty calculated as stated in rule 44.3(c). She shall be penalized even if the race is restarted or resailed, but not if it is *postponed* or *abandoned* before the starting signal. If she is similarly identified during a subsequent attempt to start the same race, she shall receive an additional 20% Scoring Penalty.

30.3 U Flag Rule

If flag U has been displayed, no part of a boat's hull shall be in the triangle formed by the ends of the starting line and the first *mark* during the last minute before her starting signal. If a boat breaks this rule and is identified, she shall be disqualified without a hearing, but not if the race is restarted or resailed.

30.4 Black Flag Rule

If a black flag has been displayed, no part of a boat's hull shall be in the triangle formed by the ends of the starting line and the first *mark* during the last minute before her starting signal. If a boat breaks this rule and is identified, she shall be disqualified without a hearing, even if the race is restarted or resailed, but not if it is *postponed* or *abandoned* before the starting signal. If a general recall is signalled or the race is *abandoned* after the starting signal, the race committee shall display her sail number before the next warning signal for that race, and if the race is restarted or resailed she shall not sail in it. If she does so, her disqualification shall not be excluded in calculating her series score.

31 TOUCHING A MARK

While *racing*, a boat shall not touch a starting *mark* before *starting*, a *mark* that begins, bounds or ends the leg of the course on which she is sailing, or a finishing *mark* after *finishing*.

32 SHORTENING OR ABANDONING AFTER THE START

32.1 After the starting signal, the race committee may shorten the course (display flag S with two sounds) or *abandon* the race (display flag N, N over H, or N over A, with three sounds),

- (a) because of foul weather,
- (b) because of insufficient wind making it unlikely that any boat will *finish* within the race time limit,
- (c) because a *mark* is missing or out of position, or
- (d) for any other reason directly affecting the safety or fairness of the competition.

In addition, the race committee may shorten the course so that other scheduled races can be sailed, or *abandon* the race because of an error in the starting procedure. However, after one boat has *started*, *sailed the course* and *finished* within the race time limit, if any, the race committee shall not *abandon* the race without considering the consequences for all boats in the race or series.

32.2 If the race committee signals a shortened course (displays flag S with two sounds), the finishing line shall be,

- (a) at a rounding *mark*, between the *mark* and a staff displaying flag S;
- (b) a line the course requires boats to cross; or
- (c) at a gate, between the gate *marks*.

The shortened course shall be signalled before the first boat crosses the finishing line.

33 CHANGING THE NEXT LEG OF THE COURSE

While boats are *racing*, the race committee may change a leg of the course that begins at a rounding *mark* or at a gate by changing the position of the next *mark* (or the finishing line) and signalling all boats before they begin the leg. The next *mark* need not be in position at that time.

- (a) If the direction of the leg will be changed, the signal shall be the display of flag C with repetitive sounds and one or both of
 - (1) the new compass bearing,
 - (2) a green triangle for a change to starboard or a red rectangle for a change to port.
- (b) If the length of the leg will be changed, the signal shall be the display of flag C with repetitive sounds and a ‘-’ if the length will be decreased or a ‘+’ if it will be increased.
- (c) Subsequent legs may be changed without further signalling to maintain the course shape.

34 MARK MISSING

If a *mark* is missing or out of position while boats are *racing*, the race committee shall, if possible,

- (a) replace it in its correct position or substitute a new one of similar appearance, or
- (b) substitute an object displaying flag M and make repetitive sound signals.

35 RACE TIME LIMIT AND SCORES

If one boat *starts, sails the course and finishes* within the time limit for that race, if any, all boats that *finish* shall be scored according to their finishing places unless the race is *abandoned*. If no boat *finishes* within the race time limit, the race committee shall *abandon* the race.

36 RACES RESTARTED OR RESAILED

If a race is restarted or resailed, a breach of a *rule* in the original race, or in any previous restart or resail of that race, shall not

- (a) prohibit a boat from competing unless she has broken rule 30.4; or
- (b) cause a boat to be penalized except under rule 2, 30.2, 30.4 or 69 or under rule 14 when she has caused injury or serious damage.

37 SEARCH AND RESCUE INSTRUCTIONS

When the race committee displays flag V with one sound, all boats and official and support vessels shall, if possible, monitor the race committee communication channel for search and rescue instructions.

PART 4

OTHER REQUIREMENTS WHEN RACING

*Part 4 rules apply only to boats **racing** unless the rule states otherwise.*

SECTION A

GENERAL REQUIREMENTS

40 PERSONAL FLOTATION DEVICES

40.1 Basic Rule

When rule 40.1 is made applicable by rule 40.2, each competitor shall wear a personal flotation device except briefly while changing or adjusting clothing or personal equipment. Wet suits and dry suits are not personal flotation devices.

40.2 When Rule 40.1 Applies

Rule 40.1 applies

- (a) if flag Y was displayed afloat with one sound before or with the warning signal, while *racing* in that race; or
- (b) if flag Y was displayed ashore with one sound, at all times while afloat that day.

However, rule 40.1 applies when so stated in the notice of race or sailing instructions.

41 OUTSIDE HELP

A boat shall not receive help from any outside source, except

- (a) help for a crew member who is ill, injured or in danger;
- (b) after a collision, help from the crew of the other vessel to get clear;
- (c) help in the form of information freely available to all boats;
- (d) unsolicited information from a disinterested source, which may be another boat in the same race.

42 PROPULSION

42.1 Basic Rule

Except when permitted in rule 42.3 or 45, a boat shall compete by using only the wind and water to increase, maintain or decrease her speed. Her crew may adjust the trim of sails and hull, and perform other acts of seamanship, but shall not otherwise move their bodies to propel the boat.

42.2 Prohibited Actions

Without limiting the application of rule 42.1, these actions are prohibited:

- (a) pumping: repeated fanning of any sail either by pulling in and releasing the sail or by vertical or athwartship body movement;
- (b) rocking: repeated rolling of the boat, induced by
 - (1) body movement,
 - (2) repeated adjustment of the sails or centreboard, or
 - (3) steering;
- (c) ooching: sudden forward body movement, stopped abruptly;
- (d) sculling: repeated movement of the helm that is either forceful or that propels the boat forward or prevents her from moving astern;
- (e) repeated tacks or gybes unrelated to changes in the wind or to tactical considerations.

42.3 Exceptions

- (a) A boat may be rolled to facilitate steering.
- (b) A boat's crew may move their bodies to exaggerate the rolling that facilitates steering the boat through a tack or a gybe, provided that, just after the tack or gybe is completed, the boat's speed is not greater than it would have been in the absence of the tack or gybe.
- (c) When surfing (rapidly accelerating down the front of a wave), planing or foiling is possible
 - (1) to initiate surfing or planing, each sail may be pulled in only once for each wave or gust of wind, or

- (2) to initiate foiling, each sail may be pulled in any number of times.
- (d) When a boat is above a close-hauled course and either stationary or moving slowly, she may scull to turn to a close-hauled course.
- (e) If a batten is inverted, the boat's crew may pump the sail until the batten is no longer inverted. This action is not permitted if it clearly propels the boat.
- (f) A boat may reduce speed by repeatedly moving her helm.
- (g) Any means of propulsion may be used to help a person or another vessel in danger.
- (h) To get clear after grounding or colliding with a vessel or object, a boat may use force applied by her crew or the crew of the other vessel and any equipment other than a propulsion engine. However, the use of an engine may be permitted by rule 42.3(i).
- (i) Sailing instructions may, in stated circumstances, permit propulsion using an engine or any other method, provided the boat does not gain a significant advantage in the race.

Note: Interpretations of rule 42 are available at the World Sailing website or by mail upon request.

43 EXONERATION

- 43.1**
- (a) When as a consequence of breaking a *rule* a boat has compelled another boat to break a *rule*, the other boat is exonerated for her breach.
 - (b) When a boat is sailing within the *room* or *mark-room* to which she is entitled and, as a consequence of an incident with a boat required to give her that *room* or *mark-room*, she breaks a rule of Section A of Part 2, rule 15, 16, or 31, she is exonerated for her breach.
 - (c) A right-of-way boat, or one sailing within the *room* or *mark-room* to which she is entitled, is exonerated for breaking rule 14 if the contact does not cause damage or injury.
- 43.2** A boat exonerated for breaking a *rule* need not take a penalty and shall not be penalized for breaking that *rule*.

44 PENALTIES AT THE TIME OF AN INCIDENT

44.1 Taking a Penalty

A boat may take a Two-Turns Penalty when she may have broken one or more rules of Part 2 in an incident while *racing*. She may take a One-Turn Penalty when she may have broken rule 31. Alternatively, the notice of race or sailing instructions may specify the use of the Scoring Penalty or some other penalty, in which case the specified penalty shall replace the One-Turn and the Two-Turns Penalty. However,

- (a) when a boat may have broken a rule of Part 2 and rule 31 in the same incident she need not take the penalty for breaking rule 31;
- (b) if the boat caused injury or serious damage or, despite taking a penalty, gained a significant advantage in the race or series by her breach her penalty shall be to retire.

44.2 One-Turn and Two-Turns Penalties

After getting well clear of other boats as soon after the incident as possible, a boat takes a One-Turn or Two-Turns Penalty by promptly making the required number of turns in the same direction, each turn including one tack and one gybe. When a boat takes the penalty at or near the finishing line, her hull shall be completely on the course side of the line before she *finishes*.

44.3 Scoring Penalty

- (a) A boat takes a Scoring Penalty by displaying a yellow flag at the first reasonable opportunity after the incident.
- (b) When a boat has taken a Scoring Penalty, she shall keep the yellow flag displayed until *finishing* and call the race committee's attention to it at the finishing line. At that time she shall also inform the race committee of the identity of the other boat involved in the incident. If this is impracticable, she shall do so at the first reasonable opportunity and within the protest time limit.
- (c) The race score for a boat that takes a Scoring Penalty shall be the score she would have received without that penalty, made worse by the number of places stated in the notice of race or sailing instructions. When the number of places is not stated, the penalty shall be 20% of the score for Did Not *Finish*,

rounded to the nearest whole number (0.5 rounded upward). The scores of other boats shall not be changed; therefore, two boats may receive the same score. However, the penalty shall not cause the boat's score to be worse than the score for Did Not *Finish*.

45 HAULING OUT; MAKING FAST; ANCHORING

A boat shall be afloat and off moorings at her preparatory signal. Thereafter, she shall not be hauled out or made fast except to bail out, reef sails or make repairs. She may anchor or the crew may stand on the bottom. She shall recover the anchor before continuing in the race unless she is unable to do so.

46 PERSON IN CHARGE

A boat shall have on board a person in charge designated by the member or organization that entered the boat. See rule 75.

47 TRASH DISPOSAL

Competitors and *support persons* shall not intentionally put trash in the water. This rule applies at all times while afloat. The penalty for a breach of this rule may be less than disqualification.

SECTION B

EQUIPMENT-RELATED REQUIREMENTS

48 LIMITATIONS ON EQUIPMENT AND CREW

48.1 A boat shall use only the equipment on board at her preparatory signal.

48.2 No person on board shall intentionally leave, except when ill or injured, or to help a person or vessel in danger, or to swim. A person leaving the boat by accident or to swim shall be back in contact with the boat before the crew resumes sailing the boat to the next *mark*.

49 CREW POSITION; LIFELINES

49.1 Competitors shall use no device designed to position their bodies outboard, other than hiking straps and stiffeners worn under the thighs.

49.2 When lifelines are required by the class rules or any other *rule*, competitors shall not position any part of their torsos outside them, except briefly to perform a necessary task. On boats equipped with upper and lower lifelines, a competitor sitting facing outboard with his waist inside the lower lifeline may have the upper part of his body outside the upper lifeline. Unless a class rule or any other *rule* specifies a maximum deflection, lifelines shall be taut. If the class rules do not specify the material or minimum diameter of lifelines, they shall comply with the corresponding specifications in the *World Sailing Offshore Special Regulations*.

Note: Those regulations are available at the World Sailing website.

50 COMPETITOR CLOTHING AND EQUIPMENT

- 50.1**
- (a) Competitors shall not wear or carry clothing or equipment for the purpose of increasing their weight.
 - (b) Furthermore, a competitor's clothing and equipment shall not weigh more than 8 kilograms, excluding a hiking or trapeze harness and clothing (including footwear) worn only below the knee. Class rules or the notice of race may specify a lower weight or a higher weight up to 10 kilograms. Class rules may include footwear and other clothing worn below the knee within that weight. A hiking or trapeze harness shall have positive buoyancy and shall not weigh more than 2 kilograms, except that class rules may specify a higher weight up to 4 kilograms. Weights shall be determined as required by Appendix H.
 - (c) A trapeze harness worn by a competitor which may be used to support the competitor on a trapeze shall be of the quick release variety complying with ISO 10862 which allows the competitor to detach from the hook or other method of attachment at any time. A class rule may change this rule to permit trapeze harnesses that are not of the quick release variety, but a class rule may not change the requirement that a quick release harness comply with ISO 10862.

Note: Rule 50.1(c) does not take effect until 1 January 2023.

50.2 Rules 50.1(b) and 50.1(c) do not apply to boats required to be equipped with lifelines.

51 MOVABLE BALLAST

All movable ballast, including sails that are not set, shall be properly stowed. Water, dead weight or ballast shall not be moved for the purpose of changing trim or stability. Floorboards, bulkheads, doors, stairs and water tanks shall be left in place and all cabin fixtures kept on board. However, bilge water may be bailed out.

52 MANUAL POWER

A boat's standing rigging, running rigging, spars and movable hull appendages shall be adjusted and operated only by the power provided by the crew.

53 SKIN FRICTION

A boat shall not eject or release a substance, such as a polymer, or have specially textured surfaces that could improve the character of the flow of water inside the boundary layer.

54 FORESTAYS AND HEADSAIL TACKS

Forestays and headsail tacks, except those of spinnaker staysails when the boat is not close-hauled, shall be attached approximately on a boat's centreline.

55 SETTING AND SHEETING SAILS

55.1 Changing Sails

When headsails or spinnakers are being changed, a replacing sail may be fully set and trimmed before the replaced sail is lowered. However, only one mainsail and, except when changing, only one spinnaker shall be carried set at a time.

55.2 Spinnaker Poles; Whisker Poles

Only one spinnaker pole or whisker pole shall be used at a time except when gybing. When in use, it shall be attached to the foremost mast.

55.3 Sheeting Sails

No sail shall be sheeted over or through any device that exerts outward pressure on a sheet or clew of a sail at a point from which, with the boat upright, a vertical line would fall outside the hull or deck, except:

- (a) a headsail clew may be connected (as defined in *The Equipment Rules of Sailing*) to a whisker pole, provided that a spinnaker is not set;
- (b) any sail may be sheeted to or led above a boom that is regularly used for a sail and is permanently attached to the mast from which the head of the sail is set;
- (c) a headsail may be sheeted to its own boom that requires no adjustment when tacking; and
- (d) the boom of a sail may be sheeted to a bumkin.

55.4 Headsails and Spinnakers

For the purposes of rules 54 and 55 and Appendix G, the definitions of ‘headsail’ and ‘spinnaker’ in *The Equipment Rules of Sailing* shall be used.

Note: The Equipment Rules of Sailing are available at the World Sailing website.

56 FOG SIGNALS AND LIGHTS; TRAFFIC SEPARATION SCHEMES

56.1 When so equipped, a boat shall sound fog signals and show lights as required by the *International Regulations for Preventing Collisions at Sea (IRPCAS)* or applicable government rules.

56.2 A boat shall comply with rule 10, Traffic Separation Schemes, of the *IRPCAS*.

Note: Appendix TS, Traffic Separation Schemes, is available at the World Sailing website. The notice of race may change rule 56.2 by stating that Section A, Section B or Section C of Appendix TS applies.

PART 5

PROTESTS, REDRESS, HEARINGS, MISCONDUCT AND APPEALS

The protest form that was included in previous editions of this book has been replaced by two forms, a hearing request form and a hearing decision form. The new forms, in various formats, are available at the World Sailing website at sailing.org/racingrules/documents. They may be downloaded and printed.

Note that The Racing Rules of Sailing does not require a particular form to be used.

Suggestions for improving these forms are welcome and should be sent to rules@sailing.org.

SECTION A

PROTESTS; REDRESS; RULE 69 ACTION

60 RIGHT TO PROTEST; RIGHT TO REQUEST REDRESS OR RULE 69 ACTION

60.1 A boat may

- (a) protest another boat, but not for an alleged breach of a rule of Part 2 or rule 31 unless she was involved in or saw the incident;
- (b) request redress; or
- (c) report to the protest committee requesting action under rule 60.3(d) or 69.2(b).

60.2 A race committee may

- (a) protest a boat, but not as a result of information arising from a request for redress or an invalid *protest*, or from a report from a person with a *conflict of interest* other than the representative of the boat herself;
- (b) request redress for a boat; or

- (c) report to the protest committee requesting action under rule 60.3(d) or 69.2(b).

60.3 A protest committee may

- (a) protest a boat, but not as a result of information arising from a request for redress or an invalid *protest*, or from a report from a person with a *conflict of interest* other than the representative of the boat herself. However, it may protest a boat
 - (1) if it learns of an incident involving her that may have resulted in injury or serious damage, or
 - (2) if during the hearing of a valid *protest* it learns that the boat, although not a *party* to the hearing, was involved in the incident and may have broken a *rule*;
- (b) call a hearing to consider redress;
- (c) act under rule 69.2(b); or
- (d) call a hearing to consider whether a *support person* has broken a *rule*, based on its own observation or information received from any source, including evidence taken during a hearing.

60.4 A technical committee may

- (a) protest a boat, but not as a result of information arising from a request for redress or an invalid *protest*, or from a report from a person with a *conflict of interest* other than the representative of the boat herself. However, it shall protest a boat if it decides that a boat or personal equipment does not comply with the class rules or with rule 50;
- (b) request redress for a boat; or
- (c) report to the protest committee requesting action under rule 60.3(d) or 69.2(b).

60.5 However, neither a boat nor a committee may protest for an alleged breach of rule 69 or a Regulation referred to in rule 6, unless permitted by the Regulation concerned.

61 PROTEST REQUIREMENTS

61.1 Informing the Protestee

- (a) The protesting boat shall inform the other boat at the first reasonable opportunity. When her *protest* will concern an

incident in the racing area, she shall hail 'Protest' and conspicuously display a red flag at the first reasonable opportunity for each. She shall display the flag until she is no longer *racing*. However,

- (1) if the other boat is beyond hailing distance, the protesting boat need not hail but she shall inform the other boat at the first reasonable opportunity;
 - (2) if the hull length of the protesting boat is less than 6 metres, she need not display a red flag;
 - (3) if the incident was an error by the other boat in *sailing the course*, she need not hail or display a red flag but she shall inform the other boat either before or at the first reasonable opportunity after the other boat *finishes*;
 - (4) if at the time of the incident it is obvious to the protesting boat that a member of either crew is in danger, or that injury or serious damage resulted, the requirements of this rule do not apply to her, but she shall attempt to inform the other boat within the time limit of rule 61.3.
- (b) If the race committee, technical committee or protest committee intends to protest a boat concerning an incident the committee observed in the racing area, it shall inform her after the race within the time limit of rule 61.3. In other cases the committee shall inform the boat of its intention to protest as soon as reasonably possible. A notice posted on the official notice board within the appropriate time limit satisfies this requirement.
- (c) If the protest committee decides to protest a boat under rule 60.3(a)(2), it shall inform her as soon as reasonably possible, close the current hearing, proceed as required by rules 61.2 and 63, and hear the original and the new *protests* together.

61.2 Protest Contents

A *protest* shall be in writing and identify

- (a) the protestor and protestee;
- (b) the incident;
- (c) where and when the incident occurred;
- (d) any *rule* the protestor believes was broken; and

- (e) the name of the protestor's representative.

However, if requirement (b) is met, requirement (a) may be met at any time before the hearing, and requirements (d) and (e) may be met before or during the hearing. Requirement (c) may also be met before or during the hearing, provided the protestee is allowed reasonable time to prepare for the hearing.

61.3 Protest Time Limit

A *protest* by a boat, or by the race committee, technical committee or protest committee about an incident observed in the racing area, shall be delivered to the race office within the protest time limit stated in the sailing instructions. If none is stated, the time limit is two hours after the last boat in the race *finishes*. Other *protests* shall be delivered to the race office no later than two hours after the protestor receives the relevant information. The protest committee shall extend the time if there is good reason to do so.

62 REDRESS

62.1 A request for redress or a protest committee's decision to consider redress shall be based on a claim or possibility that a boat's score or place in a race or series has been or may be, through no fault of her own, made significantly worse by

- (a) an improper action or omission of the race committee, protest committee, organizing authority or technical committee for the event, but not by a protest committee decision when the boat was a *party* to the hearing;
- (b) injury or physical damage because of the action of a boat that was breaking a rule of Part 2 and took an appropriate penalty or was penalized, or of a vessel not *racing* that was required to keep clear or is determined to be at fault under the *IRPCAS* or a government right-of-way rule;
- (c) giving help (except to herself or her crew) in compliance with rule 1.1; or
- (d) an action of another boat, or a crew member or *support person* of that boat, that resulted in a penalty under rule 2 or a penalty or warning under rule 69.

62.2 A request shall be in writing and identify the reason for making it. If the request is based on an incident in the racing area, it shall be

delivered to the race office within the protest time limit or two hours after the incident, whichever is later. Other requests shall be delivered as soon as reasonably possible after learning of the reasons for making the request. The protest committee shall extend the time if there is good reason to do so. No red flag is required.

- (a) However, on the last scheduled day of racing a request for redress based on a protest committee decision shall be delivered no later than 30 minutes after the decision was posted.

SECTION B

HEARINGS AND DECISIONS

63 HEARINGS

63.1 Requirement for a Hearing

A boat or competitor shall not be penalized without a protest hearing, except as provided in rules 30.2, 30.3, 30.4, 64.4(d), 64.5(b), 64.6, 69, 78.2, A5.1 and P2. A decision on redress shall not be made without a hearing. The protest committee shall hear all *protests* and requests for redress that have been delivered to the race office unless it allows a *protest* or request to be withdrawn.

63.2 Time and Place of the Hearing; Time for Parties to Prepare

All *parties* to the hearing shall be notified of the time and place of the hearing, the *protest* or redress information or the allegations shall be made available to them, and they shall be allowed reasonable time to prepare for the hearing. When two or more hearings arise from the same incident, or from very closely connected incidents, they may be heard together in one hearing. However, a hearing conducted under rule 69 shall not be combined with any other type of hearing.

63.3 Right to Be Present

- (a) A representative of each *party* to the hearing has the right to be present throughout the hearing of all the evidence. When a *protest* claims a breach of a rule of Part 2, 3 or 4, the representatives of boats shall have been on board at the time of the incident, unless there is good reason for the protest committee to rule otherwise. Any witness, other than a member

of the protest committee, shall be excluded except when giving evidence.

- (b) If a *party* to a hearing does not come to the hearing, the protest committee may nevertheless proceed with the hearing. If the *party* was unavoidably absent, the committee may reopen the hearing.

63.4 Conflict of Interest

- (a) A protest committee member shall declare any possible *conflict of interest* as soon as he is aware of it. A *party* to the hearing who believes a member of the protest committee has a *conflict of interest* shall object as soon as possible. A *conflict of interest* declared by a protest committee member shall be included in the written information provided under rule 65.2.
- (b) A member of a protest committee with a *conflict of interest* shall not be a member of the committee for the hearing, unless
 - (1) all *parties* consent, or
 - (2) the protest committee decides that the *conflict of interest* is not significant.
- (c) When deciding whether a *conflict of interest* is significant, the protest committee shall consider the views of the *parties*, the level of the conflict, the level of the event, the importance to each *party*, and the overall perception of fairness.
- (d) However, for World Sailing major events, or for other events as prescribed by the national authority of the venue, rule 63.4(b) does not apply and a person who has a *conflict of interest* shall not be a member of the protest committee.

63.5 Validity of the Protest or Request for Redress

At the beginning of the hearing the protest committee shall take any evidence it considers necessary to decide whether all requirements for the *protest* or request for redress have been met. If they have been met, the *protest* or request is valid and the hearing shall be continued. If not, the committee shall declare the *protest* or request invalid and close the hearing. If the *protest* has been made under rule 60.3(a)(1), the committee shall also determine whether or not injury or serious damage resulted from the incident in question. If not, the hearing shall be closed.

63.6 Taking Evidence and Finding Facts

- (a) The protest committee shall take the evidence, including hearsay evidence, of the *parties* present at the hearing and of their witnesses and other evidence it considers necessary. However, the committee may exclude evidence which it considers to be irrelevant or unduly repetitive.
- (b) A member of the protest committee who saw the incident shall, while the *parties* are present, state that fact and may give evidence.
- (c) A *party* present at the hearing may question any person who gives evidence.
- (d) The committee shall then give the weight it considers appropriate to the evidence presented, find the facts and base its decision on them.

63.7 Conflict Between Rules

If there is a conflict between two or more *rules* that must be resolved before the protest committee makes a decision, the committee shall apply the *rule* that it believes will provide the fairest result for all boats affected. Rule 63.7 applies only if the conflict is between rules in the notice of race, the sailing instructions, or any of the other documents that govern the event under item (g) of the definition *Rule*.

63.8 Hearings Involving Parties in Different Events

A hearing involving *parties* in different events conducted by different organizing authorities shall be heard by a protest committee acceptable to those authorities.

63.9 Hearings under Rule 60.3(d) — Support Persons

If the protest committee decides to call a hearing under rule 60.3(d), it shall promptly follow the procedures in rules 63.2, 63.3, 63.4 and 63.6, except that the information given to the *parties* shall be details of the alleged breach and a person may be appointed by the protest committee to present the allegation.

64 DECISIONS

64.1 Standard of Proof, Majority Decisions and Reclassifying Requests

- (a) A protest committee shall make its decision based on a balance of probabilities, unless provided for otherwise in the rule alleged to have been broken.
- (b) Decisions of the protest committee shall be by simple majority vote of all members. When there is equal division of votes cast, the chairman may cast an additional vote.
- (c) The protest committee shall proceed with each case, as a *protest*, request for redress or other type of request, based on the information in the written request or allegation and testimony during the hearing. This permits the type of case to be changed if appropriate.

64.2 Penalties

When the protest committee decides that a boat that is a *party* to a protest hearing has broken a *rule* and is not exonerated, it shall disqualify her unless some other penalty applies. A penalty shall be imposed whether or not the applicable *rule* was mentioned in the *protest*. If a boat has broken a *rule* when not *racing*, her penalty shall apply to the race sailed nearest in time to that of the incident. However,

- (a) if a boat has taken an applicable penalty, she shall not be further penalized under this rule unless the penalty for a *rule* she broke is a disqualification that is not excludable from her series score;
- (b) if the race is restarted or resailed, rule 36 applies.

64.3 Decisions on Redress

When the protest committee decides that a boat is entitled to redress under rule 62, it shall make as fair an arrangement as possible for all boats affected, whether or not they asked for redress. This may be to adjust the scoring (see rule A9 for some examples) or finishing times of boats, to *abandon* the race, to let the results stand or to make some other arrangement. When in doubt about the facts or probable results of any arrangement for the race or series, especially before *abandoning* the race, the protest committee shall take evidence from appropriate sources.

64.4 Decisions on Protests Concerning Class Rules

- (a) When the protest committee finds that deviations in excess of tolerances specified in the class rules were caused by damage or normal wear and do not improve the performance of the boat, it shall not penalize her. However, the boat shall not *race* again until the deviations have been corrected, except when the protest committee decides there is or has been no reasonable opportunity to do so.
- (b) When the protest committee is in doubt about the meaning of a class rule, it shall refer its questions, together with the relevant facts, to an authority responsible for interpreting the rule. In making its decision, the committee shall be bound by the reply of the authority.
- (c) When a boat is penalized under a class rule and the protest committee decides that the boat also broke the same rule in earlier races in the same event, the penalty may be imposed for all such races. No further *protest* is necessary.
- (d) When a boat penalized under a class rule states in writing that she intends to appeal, she may compete in subsequent races without changes to the boat. However, if she fails to appeal or the appeal is decided against her, she shall be disqualified without a further hearing from all subsequent races in which she competed.
- (e) Measurement costs arising from a *protest* involving a class rule shall be paid by the unsuccessful *party* unless the protest committee decides otherwise.

64.5 Decisions Concerning Support Persons

- (a) When the protest committee decides that a *support person* who is a *party* to a hearing under rule 60.3(d) or 69 has broken a *rule*, it may
 - (1) issue a warning,
 - (2) exclude the person from the event or venue or remove any privileges or benefits, or
 - (3) take other action within its jurisdiction as provided by the *rules*.
- (b) The protest committee may also penalize a boat that is a *party* to a hearing under rule 60.3(d) or 69 for the breach of a *rule* by

a *support person* by changing the boat's score in a single race, up to and including disqualification, when the protest committee decides that

- (1) the boat may have gained a competitive advantage as the result of the breach by the *support person*, or
- (2) the *support person* committed a further breach after the protest committee warned the boat in writing, following a previous hearing, that a penalty may be imposed.

64.6 Discretionary Penalties

When a boat reports within the protest time limit that she has broken a *rule* subject to a discretionary penalty, the protest committee shall decide the appropriate penalty after taking evidence from the boat and any witnesses it decides are appropriate.

65 INFORMING THE PARTIES AND OTHERS

65.1 After making its decision, the protest committee shall promptly inform the *parties* to the hearing of the facts found, the applicable *rules*, the decision, the reasons for it, and any penalties imposed or redress given.

65.2 A *party* to the hearing is entitled to receive the above information in writing, provided she asks for it in writing from the protest committee no later than seven days after being informed of the decision. The committee shall then promptly provide the information, including, when relevant, a diagram of the incident prepared or endorsed by the committee.

65.3 Unless there is good reason not to do so, after any hearing, including a hearing under rule 69, the protest committee may publish the information set out in rule 65.1. The protest committee may direct that the information is to be confidential to the *parties*.

65.4 When the protest committee penalizes a boat under a class rule, it shall send the above information to the relevant class rule authorities.

66 REOPENING A HEARING

66.1 The protest committee may reopen a hearing when it decides that it may have made a significant error, or when significant new evidence

becomes available within a reasonable time. It shall reopen a hearing when required by the national authority under rule 71.2 or R5.

66.2 A *party* to the hearing may request a reopening in writing no later than 24 hours after being informed of the decision.

- (a) However, on the last scheduled day of racing the request shall be delivered
 - (1) within the protest time limit if the requesting *party* was informed of the decision on the previous day;
 - (2) no later than 30 minutes after the *party* was informed of the decision on that day.

66.3 The protest committee shall consider all requests to reopen. When a request to reopen is being considered or the hearing is reopened,

- (a) when based only on new evidence, a majority of the members of the protest committee shall, if practicable, be members of the original committee;
- (b) when based on a significant error, the protest committee shall, if practicable, have at least one new member.

67 DAMAGES

The question of damages arising from a breach of any *rule* shall be governed by the prescriptions, if any, of the national authority.

Note: There is no rule 68.

SECTION C

MISCONDUCT

69 MISCONDUCT

69.1 Obligation not to Commit Misconduct; Resolution

- (a) A competitor, boat owner or *support person* shall not commit an act of misconduct.
- (b) Misconduct is:
 - (1) conduct that is a breach of good manners, a breach of good sportsmanship, or unethical behaviour; or
 - (2) conduct that may bring, or has brought, the sport into disrepute.
- (c) An allegation of a breach of rule 69.1(a) shall be resolved in accordance with the provisions of rule 69. It shall not be grounds for a *protest* and rule 63.1 does not apply.

69.2 Action by a Protest Committee

- (a) A protest committee acting under this rule shall have at least three members.
- (b) When a protest committee, from its own observation or from information received from any source, including evidence taken during a hearing, believes a person may have broken rule 69.1(a), it shall decide whether or not to call a hearing.
- (c) When the protest committee needs more information to make the decision to call a hearing, it shall consider appointing a person or persons to conduct an investigation. These investigators shall not be members of the protest committee that will decide the matter.
- (d) When an investigator is appointed, all relevant information he gathers, favourable or unfavourable, shall be disclosed to the protest committee, and if the protest committee decides to call a hearing, to the *parties*.
- (e) If the protest committee decides to call a hearing, it shall promptly inform the person in writing of the alleged breach and of the time and place of the hearing and follow the procedures in rules 63.2, 63.3(a), 63.4, 63.6, 65.1, 65.2, 65.3 and 66, except that:

- (1) unless a person has been appointed by World Sailing, a person may be appointed by the protest committee to present the allegation.
 - (2) a person against whom an allegation has been made under this rule shall be entitled to have an advisor and a representative with him who may act on his behalf.
- (f) If the person
- (1) provides good reason why he is unable to come to the hearing at the scheduled time, the protest committee shall reschedule it; or
 - (2) does not provide good reason and does not come to the hearing, the protest committee may conduct it without the person present.
- (g) The standard of proof to be applied is the test of the comfortable satisfaction of the protest committee, bearing in mind the seriousness of the alleged misconduct. However, if the standard of proof in this rule conflicts with the laws of a country, the national authority may, with the approval of World Sailing, change it with a prescription to this rule.
- (h) When the protest committee decides that a competitor or boat owner has broken rule 69.1(a), it may take one or more of the following actions
- (1) issue a warning;
 - (2) change their boat's score in one or more races, including disqualification(s) that may or may not be excluded from her series score;
 - (3) exclude the person from the event or venue or remove any privileges or benefits; and
 - (4) take any other action within its jurisdiction as provided by the *rules*.
- (i) When the protest committee decides that a *support person* has broken rule 69.1(a), rule 64.5 applies.
- (j) If the protest committee
- (1) imposes a penalty greater than one DNE;
 - (2) excludes the person from the event or venue; or
 - (3) in any other case if it considers it appropriate,

it shall report its findings, including the facts found, its conclusions and decision to the national authority of the person or, for specific international events listed in the World Sailing Regulations, to World Sailing. If the protest committee has acted under rule 69.2(f)(2), the report shall also include that fact and the reasons for it.

- (k) If the protest committee decides not to conduct the hearing without the person present, or if the protest committee has left the event and a report alleging a breach of rule 69.1(a) is received, the race committee or organizing authority may appoint the same or a new protest committee to proceed under this rule. If it is impractical for the protest committee to conduct a hearing, it shall collect all available information and, if the allegation seems justified, make a report to the national authority of the person or, for specific international events listed in the World Sailing Regulations, to World Sailing.

69.3 Action by a National Authority and World Sailing

The disciplinary powers, procedures and responsibilities of national authorities and World Sailing that apply are specified in the World Sailing Disciplinary Code. National authorities and World Sailing may impose further penalties, including suspension of eligibility, under that code.

SECTION D APPEALS

70 APPEALS AND REQUESTS TO A NATIONAL AUTHORITY

- 70.1** (a) Provided that the right of appeal has not been denied under rule 70.5, a *party* to a hearing may appeal a protest committee's decision or its procedures, but not the facts found.
 - (b) A boat may appeal when she is denied a hearing required by rule 63.1.
- 70.2** A protest committee may request confirmation or correction of its decision.
- 70.3** An appeal under rule 70.1 or a request by a protest committee under rule 70.2 shall be sent to the national authority with which the

organizing authority is associated under rule 89.1. However, if boats will pass through the waters of more than one national authority while *racing*, an appeal or request shall be sent to the national authority where the finishing line is located, unless the sailing instructions identify another national authority.

70.4 A club or other organization affiliated to a national authority may request an interpretation of the *rules*, provided that no *protest* or request for redress that may be appealed is involved. The interpretation shall not be used for changing a previous protest committee decision.

70.5 There shall be no appeal from the decisions of an international jury constituted in compliance with Appendix N. Furthermore, if the notice of race or the sailing instructions so state, the right of appeal may be denied provided that

- (a) it is essential to determine promptly the result of a race that will qualify a boat to compete in a later stage of an event or a subsequent event (a national authority may prescribe that its approval is required for such a procedure);
- (b) a national authority so approves for a particular event open only to boats entered by an organization affiliated to that national authority, a member of an organization affiliated to that national authority, or a personal member of that national authority; or
- (c) a national authority after consultation with World Sailing so approves for a particular event, provided the protest committee is constituted as required by Appendix N, except that only two members of the protest committee need be International Judges.

70.6 Appeals and requests shall conform to Appendix R.

71 NATIONAL AUTHORITY DECISIONS

71.1 A person who has a *conflict of interest* or was a member of the protest committee shall not take any part in the discussion or decision on an appeal or a request for confirmation or correction.

71.2 The national authority may uphold, change or reverse a protest committee's decision including a decision on validity or a decision under rule 69. Alternatively, the national authority may order that a

hearing be reopened, or that a new hearing be held by the same or a different protest committee. When the national authority decides that there shall be a new hearing, it may appoint the protest committee.

71.3 When from the facts found by the protest committee the national authority decides that a boat that was a *party* to a protest hearing broke a *rule* and is not exonerated, it shall penalize her, whether or not that boat or that *rule* was mentioned in the protest committee's decision.

71.4 The decision of the national authority shall be final. The national authority shall send its decision in writing to all *parties* to the hearing and the protest committee, who shall be bound by the decision.

PART 6

ENTRY AND QUALIFICATION

75 ENTERING AN EVENT

To enter an event, a boat shall comply with the requirements of the organizing authority of the event. She shall be entered by

- (a) a member of a club or other organization affiliated to a World Sailing member national authority,
- (b) such a club or organization, or
- (c) a member of a World Sailing member national authority.

76 EXCLUSION OF BOATS OR COMPETITORS

76.1 The organizing authority or the race committee may reject or cancel the entry of a boat or exclude a competitor, subject to rule 76.3, provided it does so before the start of the first race and states the reason for doing so. On request the boat shall promptly be given the reason in writing. The boat may request redress if she considers that the rejection or exclusion is improper.

76.2 The organizing authority or the race committee shall not reject or cancel the entry of a boat or exclude a competitor because of advertising, provided the boat or competitor complies with the World Sailing Advertising Code.

76.3 At world and continental championships no entry within stated quotas shall be rejected or cancelled without first obtaining the approval of the relevant World Sailing Class Association (or the Offshore Racing Council) or World Sailing.

77 IDENTIFICATION ON SAILS

A boat shall comply with the requirements of Appendix G governing class insignia, national letters and numbers on sails.

78 COMPLIANCE WITH CLASS RULES; CERTIFICATES

78.1 While a boat is *racing*, her owner and any other person in charge shall ensure that the boat is maintained to comply with her class rules and that her measurement or rating certificate, if any, remains valid.

In addition, the boat shall also comply at other times specified in the class rules, the notice of race or the sailing instructions.

- 78.2** When a *rule* requires a valid certificate to be produced or its existence verified before a boat *races*, and this cannot be done, the boat may *race* provided that the race committee receives a statement signed by the person in charge that a valid certificate exists. The boat shall produce the certificate or arrange for its existence to be verified by the race committee before the start of the last day of the event, or of the first series, whichever is earlier. The penalty for breaking this rule is disqualification without a hearing from all races of the event.

79 CATEGORIZATION

If the notice of race or class rules state that some or all competitors must satisfy categorization requirements, the categorization shall be carried out as described in the World Sailing Sailor Categorization Code.

80 RESCHEDULED EVENT

When an event is rescheduled to dates different from the dates stated in the notice of race, all boats entered shall be notified. The race committee may accept new entries that meet all the entry requirements except the original deadline for entries.

PART 7

RACE ORGANIZATION

85 CHANGES TO RULES

85.1 A change to a *rule* shall refer specifically to the *rule* and state the change. A change to a *rule* includes an addition to it or deletion of all or part of it.

85.2 A change to one of the following types of *rules* may be made only as shown below.

<i>Type of rule</i>	<i>Change only if permitted by</i>
Racing rule	Rule 86
Rule in a World Sailing code	A rule in the code
National authority prescription	Rule 88.2
Class rule	Rule 87
Rule in the notice of race	Rule 89.2(b)
Rule in the sailing instructions	Rule 90.2(c)
Rule in any other document governing the event	A rule in the document itself

86 CHANGES TO THE RACING RULES

86.1 A racing rule shall not be changed unless permitted in the rule itself or as follows:

- (a) Prescriptions of a national authority may change a racing rule, but not the Definitions; the Basic Principles; a rule in the Introduction; Part 1, 2 or 7; rule 42, 43, 47, 50, 63.4, 69, 70, 71, 75, 76.3 or 79; a rule of an appendix that changes one of these rules; Appendix H or N; or a rule in a World Sailing Code listed in rule 6.1.
- (b) The notice of race or sailing instructions may change a racing rule, but not rule 76.1 or 76.2, Appendix R, or a rule listed in rule 86.1(a).
- (c) Class rules may change only racing rules 42, 49, 51, 52, 53, 54, and 55.

86.2 In exception to rule 86.1, World Sailing may in limited circumstances (see World Sailing Regulation 28.1.3) authorize changes to the racing rules for a specific international event. The authorization shall be stated in a letter of approval to the organizing authority and in the notice of race or sailing instructions, and the letter shall be posted on the official notice board.

86.3 If a national authority so prescribes, the restrictions in rule 86.1 do not apply if rules are changed to develop or test proposed rules. The national authority may prescribe that its approval is required for such changes.

87 CHANGES TO CLASS RULES

The notice of race may change a class rule only when the class rules permit the change, or when written permission of the class association for the change is posted on the official notice board.

88 NATIONAL PRESCRIPTIONS

88.1 Prescriptions that Apply

The prescriptions that apply to an event are the prescriptions of the national authority with which the organizing authority is associated under rule 89.1. However, if boats will pass through the waters of more than one national authority while *racing*, the notice of race shall identify the prescriptions that will apply and when they will apply.

88.2 Changes to Prescriptions

The notice of race or sailing instructions may change a prescription. However, a national authority may restrict changes to its prescriptions with a prescription to this rule, provided World Sailing approves its application to do so. The restricted prescriptions shall not be changed.

89 ORGANIZING AUTHORITY; NOTICE OF RACE; APPOINTMENT OF RACE OFFICIALS

89.1 Organizing Authority

Races shall be organized by an organizing authority, which shall be

- (a) World Sailing;
- (b) a member national authority of World Sailing;

- (c) an affiliated club;
- (d) an affiliated organization other than a club and, if so prescribed by the national authority, with the approval of the national authority or in conjunction with an affiliated club;
- (e) an unaffiliated class association, either with the approval of the national authority or in conjunction with an affiliated club;
- (f) two or more of the above organizations;
- (g) an unaffiliated body in conjunction with an affiliated club where the body is owned and controlled by the club. The national authority of the club may prescribe that its approval is required for such an event; or
- (h) if approved by World Sailing and the national authority of the club, an unaffiliated body in conjunction with an affiliated club where the body is not owned and controlled by the club.

In rule 89.1, an organization is affiliated if it is affiliated to the national authority of the venue; otherwise the organization is unaffiliated. However, if boats will pass through the waters of more than one national authority while *racing*, an organization is affiliated if it is affiliated to the national authority of one of the ports of call.

89.2 Notice of Race; Appointment of Race Officials

- (a) The organizing authority shall publish a notice of race that conforms to rule J1.
- (b) The notice of race may be changed provided adequate notice is given.
- (c) The organizing authority shall appoint a race committee and, when appropriate, appoint a protest committee, a technical committee and umpires. However, the race committee, an international jury, a technical committee and umpires may be appointed by World Sailing as provided in its Regulations.

90 RACE COMMITTEE; SAILING INSTRUCTIONS; SCORING

90.1 Race Committee

The race committee shall conduct races as directed by the organizing authority and as required by the *rules*.

90.2 Sailing Instructions

- (a) The race committee shall publish written sailing instructions that conform to rule J2.
- (b) When appropriate, for an event where entries from other countries are expected, the sailing instructions shall include, in English, the applicable national prescriptions.
- (c) The sailing instructions may be changed provided the change is in writing and posted on the official notice board before the time stated in the sailing instructions or, on the water, communicated to each boat before her warning signal. Oral changes may be given only on the water, and only if the procedure is stated in the sailing instructions.

90.3 Scoring

- (a) The race committee shall score a race or series as provided in Appendix A unless the notice of race or sailing instructions specify some other system. A race shall be scored if it is not *abandoned* and if one boat *starts, sails the course and finishes* within the race time limit, if any, even if she retires after *finishing* or is disqualified.
- (b) When a scoring system provides for excluding one or more race scores, any score that is a Disqualification Not Excludable (DNE) shall be included in a boat's series score.
- (c) When the race committee determines from its own records or observations that it has scored a boat incorrectly, it shall correct the error and make the corrected scores available to competitors.
- (d) The race committee shall implement scoring changes directed by the protest committee or national authority as a result of decisions made in accordance with the *rules*.
- (e) When so stated in the notice of race, notwithstanding the provisions of rules 90.3(a), (b), (c) and (d), there shall be no changes to race or series scores resulting from action, including the correction of errors, initiated more than 24 hours after
 - (1) the protest time limit for the last race of the series (including a single-race series);

- (2) being informed of a protest committee decision after the last race of the series (including a single-race series); or
- (3) the results are published.

However, in exception, changes to scores shall be made resulting from a decision under rules 6, 69 or 70. The notice of race may change '24 hours' to a different time.

91 PROTEST COMMITTEE

A protest committee shall be

- (a) a committee appointed by the organizing authority or race committee;
- (b) an international jury appointed by the organizing authority or as prescribed in the World Sailing Regulations. It shall be composed as required by rule N1 and have the authority and responsibilities stated in rule N2. A national authority may prescribe that its approval is required for the appointment of international juries for races within its jurisdiction, except World Sailing events or when international juries are appointed by World Sailing under rule 89.2(c); or
- (c) a committee appointed by the national authority under rule 71.2.

92 TECHNICAL COMMITTEE

92.1 A technical committee shall be a committee of at least one member and be appointed by the organizing authority or the race committee or as prescribed in the World Sailing Regulations.

92.2 The technical committee shall conduct equipment inspection and event measurement as directed by the organizing authority and as required by the *rules*.

APPENDIX A

SCORING

See rule 90.3.

A1 NUMBER OF RACES

The number of races scheduled and the number required to be completed to constitute a series shall be stated in the notice of race or sailing instructions.

A2 SERIES SCORES

A2.1 Each boat's series score shall, subject to rule 90.3(b), be the total of her race scores excluding her worst score. However, the notice of race or sailing instructions may make a different arrangement by providing, for example, that no score will be excluded, that two or more scores will be excluded, or that a specified number of scores will be excluded if a specified number of races are completed. A race is completed if scored; see rule 90.3(a). If a boat has two or more equal worst scores, the score(s) for the race(s) sailed earliest in the series shall be excluded. The boat with the lowest series score wins and others shall be ranked accordingly.

A2.2 If a boat has entered any race in a series, she shall be scored for the whole series.

A3 STARTING TIMES AND FINISHING PLACES

The time of a boat's starting signal shall be her starting time, and the order in which boats *finish* a race shall determine their finishing places. However, when a handicap or rating system is used a boat's corrected time shall determine her finishing place.

A4 SCORING SYSTEM

This Low Point System will apply unless the notice of race or sailing instructions specify another system; see rule 90.3(a).

Each boat *starting* and *finishing* and not thereafter retiring, being penalized or given redress shall be scored points as follows:

<i>Finishing place</i>	<i>Points</i>
First	1
Second	2
Third	3
Fourth	4
Fifth	5
Sixth	6
Seventh	7
Each place thereafter	Add 1 point

A5 SCORES DETERMINED BY THE RACE COMMITTEE

A5.1 A boat that did not *start*, *sail the course* or *finish*, or comply with rule 30.2, 30.3, 30.4 or 78.2, or that retires or takes a penalty under rule 44.3(a), shall be scored accordingly by the race committee without a hearing. Only the protest committee may take other scoring actions that worsen a boat's score.

A5.2 A boat that did not *start*, did not *sail the course*, did not *finish*, retired or was disqualified shall be scored points for the finishing place one more than the number of boats entered in the series. A boat that is penalized under rule 30.2 or that takes a penalty under rule 44.3(a) shall be scored points as provided in rule 44.3(c).

A5.3 If the notice of race or sailing instructions state that rule A5.3 will apply, rule A5.2 is changed so that a boat that came to the starting area but did not *start*, did not *sail the course*, did not *finish*, retired or was disqualified shall be scored points for the finishing place one more than the number of boats that came to the starting area, and a boat that did not come to the starting area shall be scored points for the finishing place one more than the number of boats entered in the series.

A6 CHANGES IN PLACES AND SCORES OF OTHER BOATS

A6.1 If a boat is disqualified from a race or retires after *finishing*, each boat with a worse finishing place shall be moved up one place.

A6.2 If the protest committee decides to give redress by adjusting a boat's score, the scores of other boats shall not be changed unless the protest committee decides otherwise.

A7 RACE TIES

If boats are tied at the finishing line or if a handicap or rating system is used and boats have equal corrected times, the points for the place for which the boats have tied and for the place(s) immediately below shall be added together and divided equally. Boats tied for a race prize shall share it or be given equal prizes.

A8 SERIES TIES

A8.1 If there is a series-score tie between two or more boats, each boat's race scores shall be listed in order of best to worst, and at the first point(s) where there is a difference the tie shall be broken in favour of the boat(s) with the best score(s). No excluded scores shall be used.

A8.2 If a tie remains between two or more boats, they shall be ranked in order of their scores in the last race. Any remaining ties shall be broken by using the tied boats' scores in the next-to-last race and so on until all ties are broken. These scores shall be used even if some of them are excluded scores.

A9 GUIDANCE ON REDRESS

If the protest committee decides to give redress by adjusting a boat's score for a race, it is advised to consider scoring her

- (a) points equal to the average, to the nearest tenth of a point (0.05 to be rounded upward), of her points in all the races in the series except the race in question;
- (b) points equal to the average, to the nearest tenth of a point (0.05 to be rounded upward), of her points in all the races before the race in question; or
- (c) points based on the position of the boat in the race at the time of the incident that justified redress.

A10 SCORING ABBREVIATIONS

These scoring abbreviations shall be used for recording the circumstances described:

DNC	Did not <i>start</i> ; did not come to the starting area
DNS	Did not <i>start</i> (other than DNC and OCS)
OCS	Did not <i>start</i> ; on the course side of the starting line at her starting signal and failed to <i>start</i> , or broke rule 30.1
ZFP	20% penalty under rule 30.2
UFD	Disqualification under rule 30.3
BFD	Disqualification under rule 30.4
SCP	Scoring Penalty applied
NSC	Did not <i>sail the course</i>
DNF	Did not <i>finish</i>
RET	Retired
DSQ	Disqualification
DNE	Disqualification that is not excludable
RDG	Redress given
DPI	Discretionary penalty imposed

APPENDIX J

NOTICE OF RACE AND SAILING INSTRUCTIONS

See rules 89.2 and 90.2. In this appendix, the term 'event' includes a race or series of races.

A rule in the notice of race need not be repeated in the sailing instructions.

Care should be taken to ensure that there is no conflict between rules in the notice of race, the sailing instructions or any other document that governs the event.

J1 NOTICE OF RACE CONTENTS

J1.1 The notice of race shall include the following:

- (1) the title, place and dates of the event and name of the organizing authority;
- (2) that the event will be governed by the *rules* as defined in *The Racing Rules of Sailing*;
- (3) a list of any other documents that will govern the event (for example, *The Equipment Rules of Sailing*, to the extent that they apply), stating where or how each document or an electronic copy of it may be obtained;
- (4) the classes to race, any handicap or rating system that will be used, and the classes to which it will apply; conditions of entry and any restrictions on entries;
- (5) the procedures and times for registration or entry, including fees and any closing dates;
- (6) the times of warning signals for the practice race, if one is scheduled, and the first race, and succeeding races if known.

J1.2 The notice of race shall include any of the following that will apply:

- (1) times or procedures for equipment inspection or event measurement, or requirements for measurement or rating certificates;

- (2) changes to the racing rules authorized by World Sailing under rule 86.2, referring specifically to each rule and stating the change (also include the statement from World Sailing authorizing the change);
- (3) changes to class rules, as permitted under rule 87, referring specifically to each rule and stating the change;
- (4) categorization or classification requirements that some or all competitors must satisfy;
 - (a) for sailor categorization (see rule 79 and the World Sailing Sailor Categorization Code), or
 - (b) for functional classification for Para World Sailing events (see World Sailing Para Classification Rules);
- (5) that boats will be required to display advertising chosen and supplied by the organizing authority (see rule 6 and the World Sailing Advertising Code) and other information related to advertising;
- (6) when entries from other countries are expected, any national prescriptions that may require advance preparation (see rule 88);
- (7) prescriptions that will apply if boats will pass through the waters of more than one national authority while *racing*, and when they will apply (see rule 88.1);
- (8) alternative communication required in place of hails under rule 20 (see rule 20.4(b));
- (9) any change in the weight limit for a competitor's clothing and equipment permitted by rule 50.1(b);
- (10) any requirements necessary for compliance with data protection legislation that applies in the venue of the event;
- (11) an entry form, to be signed by the boat's owner or owner's representative, containing words such as 'I agree to be bound by *The Racing Rules of Sailing* and by all other *rules* that govern this event.';
- (12) replacement of the rules of Part 2 with the right-of-way rules of the *International Regulations for Preventing Collisions at Sea* or other government right-of-way rules, the time(s) or place(s) they will apply, and any night signals to be used by the race committee.

J1.3 The notice of race shall include any of the following that will apply and that would help competitors decide whether to attend the event or that conveys other information they will need before the sailing instructions become available:

- (1) changes to the racing rules permitted by rule 86, referring specifically to each rule and stating the change;
- (2) changes to the national prescriptions (see rule 88.2);
- (3) the time and place at which the sailing instructions will be available;
- (4) a general description of the course, or type of courses, to be sailed;
- (5) the scoring system, if different from the system in Appendix A, included by reference to class rules or other *rules* governing the event, or stated in full. State the number of races scheduled and the minimum number that must be completed to constitute a series. If appropriate, for a series where the number of starters may vary substantially, state that rule A5.3 applies;
- (6) the penalty for breaking a rule of Part 2, other than the Two-Turns Penalty;
- (7) the time after which no warning signal will be made on the last scheduled day of racing;
- (8) denial of the right of appeal, subject to rule 70.5;
- (9) for chartered or loaned boats, whether rule G3 applies;
- (10) prizes.

J2 SAILING INSTRUCTION CONTENTS

J2.1 Unless included in the notice of race, the sailing instructions shall include the following:

- (1) the information in rules J1.3(1), (2) and (5) and, when applicable, rules J1.3(6), (7), (8), (9) and (10);
- (2) the schedule of races and the times of warning signals for each class;
- (3) a complete description of the course(s) to be sailed, or a list of *marks* from which the course will be selected and, if relevant, how courses will be signalled;

- (4) descriptions of *marks*, including starting and finishing *marks*, stating the order in which *marks* are to be passed and the side on which each is to be left and identifying all rounding *marks* (see the definition *Sail the Course*);
- (5) descriptions of the starting and finishing lines, class flags and any special signals to be used;
- (6) the race time limit, if any, for the first boat to *finish* (see rule 35);
- (7) location(s) of official notice board(s) or address of online notice board; location of the race office.

J2.2 Unless included in the notice of race, the sailing instructions shall include those of the following that will apply:

- (1) whether Appendix P will apply;
- (2) when appropriate, at an event where entries from other countries are expected, a copy in English of the national prescriptions that will apply;
- (3) procedure for changing the sailing instructions;
- (4) procedure for giving oral changes to the sailing instructions on the water (see rule 90.2(c));
- (5) safety requirements, such as requirements and signals for personal flotation devices, check-in at the starting area, and check-out and check-in ashore;
- (6) signals to be made ashore and location of signal station(s);
- (7) restrictions controlling changes to boats when supplied by the organizing authority;
- (8) when and under what circumstances propulsion is permitted under rule 42.3(i);
- (9) restrictions on use of *support person* vessels, plastic pools, radios, etc.; on trash disposal; on hauling out; and on outside assistance provided to a boat that is not *racing*;
- (10) the racing area (a chart is recommended);
- (11) location of the starting area and any restrictions on entering it;
- (12) any special procedures or signals for individual or general recall; 404-451-7743

- (13) approximate course length and approximate length of windward legs;
- (14) any special procedures or signals for changing a leg of the course (see rule 33);
- (15) description of any object, area or line designated by the race committee to be an *obstruction* (see the definition *Obstruction*), and any restriction on entering such an area or crossing such a line;
- (16) boats identifying *mark* locations;
- (17) any special procedures for shortening the course or for *finishing* a shortened course;
- (18) the time limit, if any, for boats other than the first boat to *finish* and any other time limits or target times that apply while boats are *racing*;
- (19) declaration requirements;
- (20) time allowances;
- (21) time limits, place of hearings, and special procedures for *protests*, requests for redress or requests for reopening;
- (22) the national authority's approval of the appointment of an international jury, when required under rule 91(b);
- (23) the time limit for requesting a hearing under rule N1.4(b), if not 30 minutes;
- (24) when required by rule 70.3, the national authority to which appeals and requests are required to be sent;
- (25) substitution of competitors;
- (26) the minimum number of boats appearing in the starting area required for a race to be started;
- (27) when and where races *postponed* or *abandoned* for the day will be sailed;
- (28) tides and currents;
- (29) other commitments of the race committee and obligations of boats.

APPENDIX P

SPECIAL PROCEDURES FOR RULE 42

All or part of this appendix applies only if the notice of race or sailing instructions so state.

P1 OBSERVERS AND PROCEDURE

P1.1 The protest committee may appoint observers, including protest committee members, to act in accordance with rule P1.2. A person with a significant *conflict of interest* shall not be appointed as an observer.

P1.2 An observer appointed under rule P1.1 who sees a boat breaking rule 42 may penalize her by, as soon as reasonably possible, making a sound signal, pointing a yellow flag at her and hailing her sail number, even if she is no longer *racing*. A boat so penalized shall not be penalized a second time under rule 42 for the same incident.

P2 PENALTIES

P2.1 First Penalty

When a boat is first penalized under rule P1.2 her penalty shall be a Two-Turns Penalty under rule 44.2. If she fails to take it she shall be disqualified without a hearing.

P2.2 Second Penalty

When a boat is penalized a second time during the event, she shall promptly retire. If she fails to do so she shall be disqualified without a hearing and her score shall not be excluded.

P2.3 Third and Subsequent Penalties

When a boat is penalized a third or subsequent time during the event, she shall promptly retire. If she does so her penalty shall be disqualification without a hearing and her score shall not be excluded. If she fails to do so her penalty shall be disqualification without a hearing from all races in the event, with no score excluded, and the protest committee shall consider calling a hearing under rule 69.2.

P2.4 Penalties Near the Finishing Line

If a boat is penalized under rule P2.2 or P2.3 and it was not reasonably possible for her to retire before *finishing*, she shall be scored as if she had retired promptly.

P3 POSTPONEMENT, GENERAL RECALL OR ABANDONMENT

If a boat has been penalized under rule P1.2 and the race committee signals a *postponement*, general recall or *abandonment*, the penalty is cancelled, but it is still counted to determine the number of times she has been penalized during the event.

P4 REDRESS LIMITATION

A boat shall not be given redress for an action by a member of the protest committee or its designated observer under rule P1.2 unless the action was improper due to a failure to take into account a race committee signal or a class rule.

P5 FLAGS O AND R

P5.1 When Rule P5 Applies

Rule P5 applies if the class rules permit pumping, rocking and ooching when the wind speed exceeds a specified limit.

P5.2 Before the Starting Signal

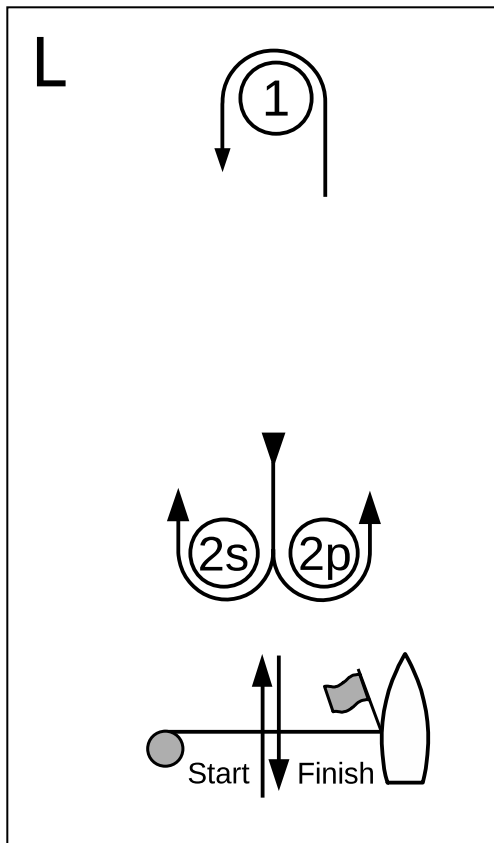
- (a) The race committee may signal that pumping, rocking and ooching are permitted, as specified in the class rules, by displaying flag O before or with the warning signal.
- (b) If the wind speed becomes less than the specified limit after flag O has been displayed, the race committee may *postpone* the race. Then, before or with a new warning signal, the committee shall display either flag R, to signal that rule 42 as changed by the class rules applies, or flag O, as provided in rule P5.2(a).
- (c) If flag O or flag R is displayed before or with the warning signal, it shall be displayed until the starting signal.

P5.3 After the Starting Signal

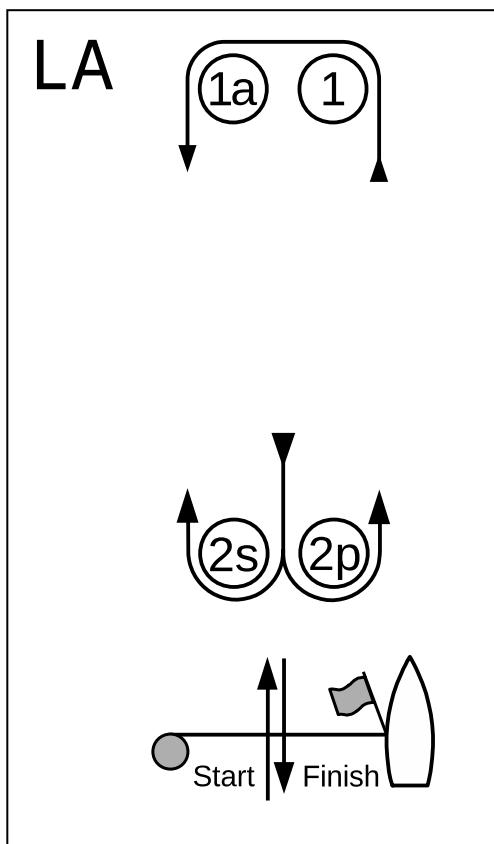
After the starting signal,

- (a) if the wind speed exceeds the specified limit, the race committee may display flag O with repetitive sounds at a *mark* to signal that pumping, rocking and ooching are permitted, as specified in the class rules, after passing the *mark*;
- (b) if flag O has been displayed and the wind speed becomes less than the specified limit, the race committee may display flag R with repetitive sounds at a *mark* to signal that rule 42, as changed by the class rules, applies after passing the *mark*.

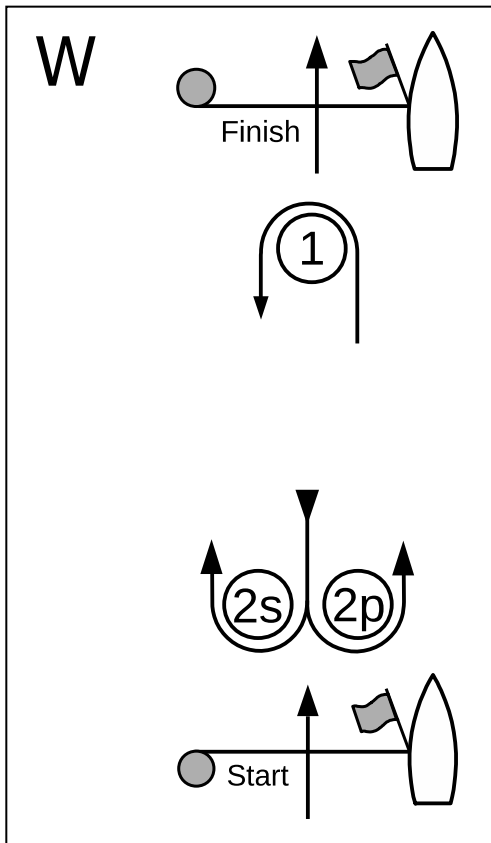
COURSE DIAGRAMS



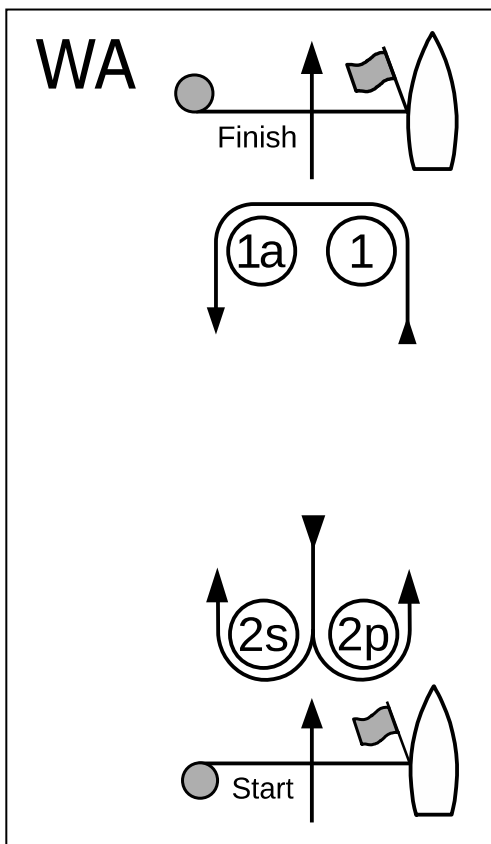
Course L – Windward/Leeward, Leeward Finish	
<i>Signal</i>	<i>Mark Rounding Order</i>
L2	Start – 1 – 2s/2p – 1 – Finish
L3	Start – 1 – 2s/2p – 1 – 2s/2p – 1 – Finish
L4	Start – 1 – 2s/2p – 1 – 2s/2p – 1 – 2s/2p – 1 – Finish



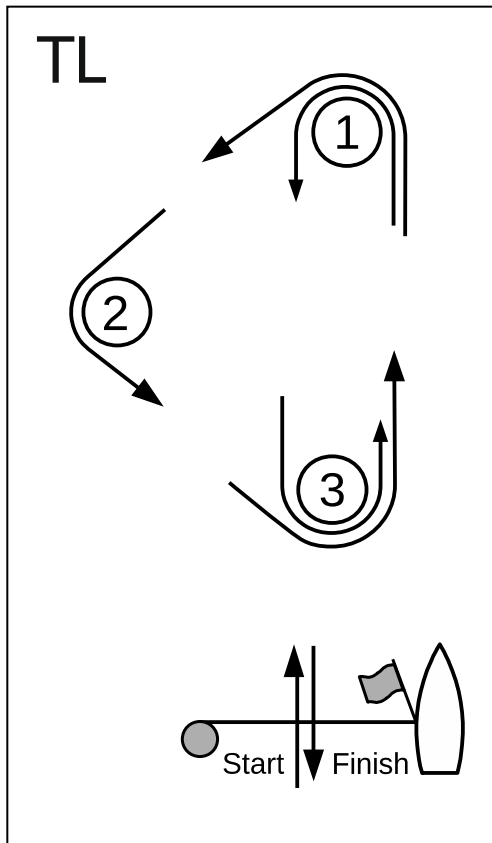
Course LA – Windward/Leeward with Offset Mark, Leeward Finish	
<i>Signal</i>	<i>Mark Rounding Order</i>
LA2	Start – 1 – 1a – 2s/2p – 1 – 1a – Finish
LA3	Start – 1 – 1a – 2s/2p – 1 – 1a – 2s/2p – 1 – 1a – Finish
LA4	Start – 1 – 1a – 2s/2p – 1 – 1a – 2s/2p – 1 – 1a – 2s/2p – 1 – 1a – Finish



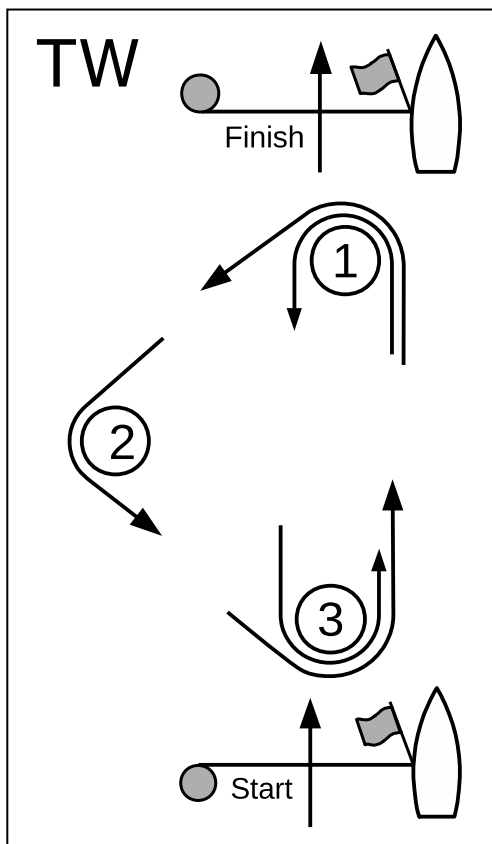
Course W – Windward/Leeward, Windward Finish	
<i>Signal</i>	<i>Mark Rounding Order</i>
W2	Start – 1 – 2s/2p – Finish
W3	Start – 1 – 2s/2p – 1 – 2s/2p – Finish
W4	Start – 1 – 2s/2p – 1 – 2s/2p – 1 – 2s/2p – Finish



Course WA – Windward/Leeward with Offset Mark, Windward Finish	
<i>Signal</i>	<i>Mark Rounding Order</i>
WA2	Start – 1 – 1a – 2s/2p – Finish
WA3	Start – 1 – 1a – 2s/2p – 1 – 1a – 2s/2p – Finish
WA4	Start – 1 – 1a – 2s/2p – 1 – 1a – 2s/2p – 1 – 1a – 2s/2p – Finish



Course TL – Triangle, Leeward Finish	
Signal	Mark Rounding Order
TL2	Start – 1 – 2 – 3 – 1 – Finish
TL3	Start – 1 – 2 – 3 – 1 – 3 – 1 – Finish
TL4	Start – 1 – 2 – 3 – 1 – 3 – 1 – 3 – 1 – Finish



Course TW – Triangle, Windward Finish	
Signal	Mark Rounding Order
TW2	Start – 1 – 2 – 3 – Finish
TW3	Start – 1 – 2 – 3 – 1 – 3 – Finish
TW4	Start – 1 – 2 – 3 – 1 – 3 – 1 – 3 – Finish

APPENDIX T

ARBITRATION

This appendix applies only if the notice of race or sailing instructions so state.

Arbitration adds an extra step to the protest resolution process but can eliminate the need for some protest hearings, thus speeding up the process for events in which many protests are expected. Arbitration may not be appropriate for all events as it requires an additional knowledgeable person to act as the arbitrator. Further guidance on arbitration can be found in the World Sailing Judges Manual, which can be downloaded from the World Sailing website.

T1 POST-RACE PENALTIES

- (a) Provided that rule 44.1(b) does not apply, a boat that may have broken one or more rules of Part 2 or rule 31 in an incident may take a Post-Race Penalty at any time after the race until the beginning of a protest hearing involving the incident.
- (b) A Post-Race Penalty is a 30% Scoring Penalty calculated as stated in rule 44.3(c). However, rule 44.1(a) applies.
- (c) A boat takes a Post-Race Penalty by delivering to the arbitrator or a member of the protest committee a written statement that she accepts the penalty and that identifies the race number and where and when the incident occurred.

T2 ARBITRATION MEETING

An arbitration meeting will be held prior to a protest hearing for each incident resulting in a *protest* by a boat involving one or more rules of Part 2 or rule 31, but only if each *party* is represented by a person who was on board at the time of the incident. No witnesses will be permitted. However, if the arbitrator decides that rule 44.1(b) may apply or that arbitration is not appropriate, the meeting will not be held, and if a meeting is in progress, it will be closed.

T3 ARBITRATOR'S OPINION

Based on the evidence given by the representatives, the arbitrator will offer an opinion as to what the protest committee is likely to decide:

- (a) the *protest* is invalid,
- (b) no boat will be penalized for breaking a *rule*, or
- (c) one or more boats will be penalized for breaking a *rule*, identifying the boats and the penalties.

T4 ARBITRATION MEETING OUTCOMES

After the arbitrator offers an opinion,

- (a) a boat may take a Post-Race Penalty, and
- (b) a boat may ask to withdraw her *protest*. The arbitrator may then act on behalf of the protest committee in accordance with rule 63.1 to allow the withdrawal.

Unless all *protests* involving the incident are withdrawn, a protest hearing will be held.